



HERSHEY VALVE



HERSHEY VALVE 环琪塑胶



FLOWGUARD
 SCH 40/80, DIN PN10/16
 FlowGuard CPVC Superior
 Water Distribution System
 CPVC纯净水管路系统



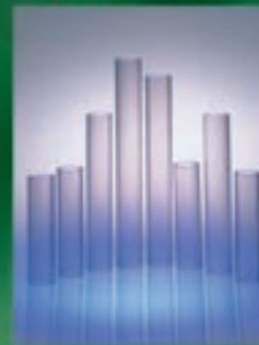
CORZAN
 SCH 40/80, DIN PN10/16
 CORZAN CPVC Advanced
 Industrial System
 CPVC先进洁净水管路系统



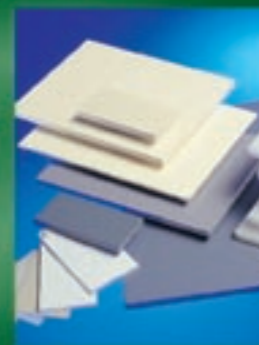
BlazeMaster
 SDR13.5 BlazeMaster CPVC
 High Performance
 Fire Sprinkler System
 CPVC高效消防管路系统



HealthGuard
 Health Guard CPVC
 Hospital Piping System
 CPVC医疗管路系统



SCH 40 Clear PVC
 Piping System
 PVC透明管路系统



CPVC Sheet
 CPVC FM 4910 Sheet
 HT-PVC Sheet
 氯化烯材料



SCH 40/80, DIN PN10/16
 Piping System
 UPVC工业管路系统



CPVC-FR-PVC
 Cable Tray
 阻燃电缆桥架

Thermoplastic Valves & Fittings 热塑性塑料阀门与配件专业制造

Thermoplastic Valves & Fittings

塑胶阀门与配件专业制造



■ April, 2005. 2005年四月印刷
 ■ We ask for your understanding if due to product improvements the product and colors in this catalogue have not yet been updated. We also ask for your understanding if due to printing limitations the objects and colors in this catalogue do not match the actual products exactly. 本型录若有更新时, 恕不另行通知
 ■ The products in this catalogue have been registered with the patents office. The reprinting of this publication in any form or the imitation of any of the products described within is expressly forbidden without the express permission of the HERSHEY VALVE CO., LTD. 本型录内所有产品均已在专利局注册, 未经许可, 任何形式复制或仿造均属非法。



- 1980 Established in Chingshui, Taichung, Taiwan.
成立于台中县清水镇
- 1982 Moved to current location, Kwanlien industrial District, Wuchi, Taichung, Taiwan.
进入台中县精镇工业区
- 1982 Overseas marketing department set up to promote export sales.
成立国外业务部门，全力拓展外销
- 1984 Marketing area gradually expanded to the USA, Canada, Australia, Europe and other advanced countries.
产品行销网逐步遍及美、加、澳、欧洲等工业先进国家和地区
- 1988 The USA and Canada became the major export markets.
美、加地区成为最主要外销市场
- 1990 The Japan market made the most important export area in Asia.
日本市场业务快速成长，成为亚洲地区最重要外销据点
- 1993 The Korea Market grew quickly.
韩国市场大幅成长
- 1994 Annual sales exceeded US \$10 millions.
年营业额突破1000万美金
- 1996 Hershey China Shanghai factory formally came on line
中国上海厂正式投产
- 1996 Hershey Taiwan factory was awarded SGS ISO-9002 certification.
台湾总厂获得瑞士SGS ISO-9002品质系统认证
- 1996 The main valve products acquired NSF international approval.
主要阀类产品获得美国NSF国家卫生基金会认证
- 1996 Hershey Valve added product liability insurance.
环琪塑胶产品投保产品责任险
- 1997 Shanghai factory was awarded SGS ISO-9002 certification.
中国上海厂获得ISO-9002品质系统认证
- 1997 BFGoodrich authorized Hershey Valve as the exclusive Taiwan user and the first Asia user of the CORZAN and BlazeMaster CPVC materials.
BFGoodrich正式授权环琪塑胶为台湾独家、亚洲第一CORZAN及BlazeMaster CPVC原料使用厂商
- 1997 SCH40/80 UPVC, SCH40/80 CORZAN CPVC, SDR13.5 BlazeMaster CPVC piping systems came on line.
SCH40-80 UPVC, SCH40-80 CORZAN工业CPVC, SDR13.5 BlazeMaster消防CPVC管道系统投产
- 1997 Hershey Taiwan 2nd factory came on line.
台湾2厂投产
- 1998 BFGoodrich authorized Hershey Valve as the exclusive Taiwan user and the first Asia user of the FlowGuard CPVC material.
BFGoodrich正式授权环琪塑胶为台湾独家、亚洲第一FlowGuard原料使用厂商
- 1998 SCH40 FlowGuard CPVC superior potable water distribution system, SCH40 clear PVC piping system came on line.
SCH40 FlowGuard CPVC纯净水净管路系统, SCH40 Clear PVC Piping System正式投产
- 1999 Hershey Taiwan factories were awarded LPCB and BSMI ISO-9002 certification
台湾总厂、2厂获得英国LPCB及台湾BSMI ISO-9002品质系统认证
- 1999 BlazeMaster CPVC fire sprinkler system was certificated by LPCB.
环琪BlazeMaster消防管路系统获得英国LPCB消防安全认证
- 2001 Hershey Taiwan 1st factory expanded with new 2,500-ton injection machine and large-scale CNC lathe.
台湾总厂扩建添购2,500吨级超大型射出机及大型CNC车工机

- 2002 The new Hershey China Taicang factory came on line.
环琪塑胶中国太仓厂正式试车商业运转
- 2002 The new Hershey Taiwan Plate & Duct system factory formally came on line.
环琪塑胶台湾板材及风管工厂正式试车
- 2002 Hershey Valve Taiwan was awarded ISO 9001:2000 certification.
台湾总厂、板材厂获得法国BVQI ISO-9001品质系统认证
- 2003 Taiwan Hershey starts to manufacture large size of pipe fitting & sheet.
台湾环琪塑胶开始制作大尺寸管材、管件和板材
- 2003 Hershey China Taicang factory was awarded CQC ISO-9001 certification.
中国太仓厂获得CQC中国质量认证中心ISO-9001品质系统认证
- 2003 Hershey factory in Shanghai is moved and merged to Taichung factory.
中国上海厂搬迁至太仓厂合并管理
- 2003 BlazeMaster CPVC piping system was WRAS certificate approved.
BlazeMaster CPVC 消防管路系统获得英国WRAS认证
- 2005 Newson(BFGoodrich) authorized Hershey Valve as the exclusive Asia user and the first world user of HealthGuard CPVC material.
Newson(BFGoodrich)正式授权环琪塑胶为亚洲独家、世界第一HealthGuard CPVC原料使用厂商
- 2005 Hershey China Taiwan factory 2nd phase plant expansion was completed.
中国太仓厂2期厂房扩建完成

In the midst of stiff competition, we have found a clear niche for ourselves where we can exhibit products that strive for perfection.

Group Vision 集团愿景

- Hershey Group will be the leader in Asia Pacific for plastic engineering piping systems in industry, plumbing, and fire fighting area
环琪集团于亚太地区在供应工业、冷热水及消防塑胶工程管路系统将会居领导地位
- Hershey Group will be the representative of CPVC manufacturing and products in Asia Pacific
环琪将成为亚太地区CPVC产品及专业制造的代言人
- Hershey Group will work with partners to provide complete engineering system for Asia Pacific customers
环琪集团将与策略伙伴合作提供亚太地区客户完整的工程管路系统设备





HERSHEY VALVE

Material:

- CPVC (NSF approved)
- UPVC (type 1, grade 1, NSF approved)
- PVC
- PVDF
- PP, PP/Fiberglass
- ABS
- EPDM, FPM, NBR

Application:

- Industrial Production
- Chemical Production
- Water Treatment
- Irrigation
- Fish Cultivation
- Pool and Spa
- General Plumbing

Content & Index

VP-200 Series



Various Fittings 各种管件

- VP-200 Compression Tee 三通快速接头
- VP-210 Compression Coupling 快速接头
- VP-220 T (Y) type Strainer T (Y) 型过滤器
- VP-230 Expansion Joint 伸缩管
- VP-240 Unions 由令
- VP-250 Blind Flanges 盲法兰
- VP-260 TS Flanges (Single Piece) 单片式法兰
- VP-270 二片式法兰 Van Stone Flanges (Two Pieces)
- VP-289 Rubber Gaskets 橡胶垫片
- Expansion Repair Coupling 伸缩接头

NEW

VP-600 Series



Union Ball Valves 由令球阀

- VP-620 单边由令球阀 Single Union Ball Valve
- VP-640 双边由令球阀 Double Union Ball Valve
- VP-680, 690 气动式 / 电动式双由令球阀 Pneumatic / Electric Actuator Double Union Ball Valve

VP-300 Series



Ball Valves 球阀

- VP-310, 320, 330, 340 经济型单边由令球阀 Economy Single Union Ball Valve
- VP-360, 370 两片式球阀 Two-piece Ball Valve

VP-700 Series



Diaphragm Valves 隔膜阀

- VP-710 法兰式隔膜阀 Diaphragm Valve (Flanged)
- VP-720, 730 插管式 / 由令式隔膜阀 Diaphragm Valve (Spigot, Union - Socket / Threaded)

VP-400 Series



Check Valves 逆止阀

- VP-420, 430 经济型摆动式 (球阀) 逆止阀 Economy Swing Check (Foot) Valve
- VP-440 双由令球阀逆止阀 True Union Ball Check Valve
- VP-450 Swing Check Valve 工业用摆动式逆止阀
- VP-460, 470 单边由令球阀 (球阀) 逆止阀 Ball Check (Foot) Valve
- VP-480, 490 弹簧式 (球阀) 逆止阀 Spring Check (Foot) Valve

VP-800 Series



Butterfly Valves 蝶阀

- VP-810 把手式蝶阀 Butterfly Valve (Handle type)
- VP-820 齿轮式蝶阀 Butterfly Valve (Gear Box)
- VP-830 气动式蝶阀 Pneumatic Actuator Butterfly Valve
- VP-840 电动式蝶阀 Electric Actuator Butterfly Valve

VP-900 Series



Molded-In-Place Ball Valve 简单型球阀

- VP-900, 910 简单型球阀 Compact Ball Valve

Page Index

5 VP-200 Series	
VP-200 Compression Tee	7
VP-210 Compression Coupling	9
VP-220 T (Y) type Strainer	11
VP-230 Expansion Joint	13
VP-240 Unions	15
VP-250, 260, 270 Blind Flanges / One-piece (TS) Flanges / Two-pieces (Van Stone) Flanges	17
VP-289 Rubber Gaskets	21
Expansion Repair Coupling	23
25 VP-300 Series	
VP-310, 320, 330, 340 Economy Single Union Ball Valve	27
VP-360, 370 Two-piece Ball Valve	29
31 VP-400 Series	
VP-420, 430 Economy Swing Check (Foot) Valve	33
VP-440 True Union Ball Check Valve	35
VP-450 Swing Check Valve	37
VP-460, 470 Ball Check (Foot) Valve	39
VP-480, 490 Spring Check (Foot) Valve	41
43 VP-600 Series	
VP-620 Single Union Ball Valve	45
VP-640 Double Union Ball Valve	47
VP-680, 690 Pneumatic / Electric Actuator Double Union Ball Valve	49
51 VP-700 Series	
VP-710 Diaphragm Valve (Flanged)	53
VP-720, 730 Diaphragm Valve (Spigot, Union - Socket / Threaded)	55
57 VP-800 Series	
VP-810 Butterfly Valve (Handle type)	59
VP-820 Butterfly Valve (Gear Box)	61
VP-830 Pneumatic Actuator Butterfly Valve	63
VP-840 Electric Actuator Butterfly Valve	65
67 VP-900 Series	
VP-900, 910 Compact Ball Valve	69
71 Products Properties	
REFERENCE RANGE OF TEMPERATURE	
CHEMICAL RESISTANCE OF MATERIAL	
BASIC PROPERTIES OF PLASTICS	
GENERAL INSTALLION INSTRUCTION	

Excellent & Advanced

VP-200 Series

Various Fittings 各种管件

- VP-200
Compression Tee
三通快速接头
- VP-210
Compression Coupling
快速接头
- VP-220
T(Y) type Strainer
T(Y)型过滤器
- VP-230
Expansion Joint
伸缩管
- VP-240
Unions
由令
- VP-250
Blind Flanges
盲法兰
- VP-260
TS Flanges (Single Piece)
单片式法兰
- VP-270
Van Stone Flanges (Two Pieces)
二片式法兰
- VP-289
Rubber Gaskets
橡胶垫片
- Expansion Repair Coupling
伸缩接头



5



6

VP-200 Series

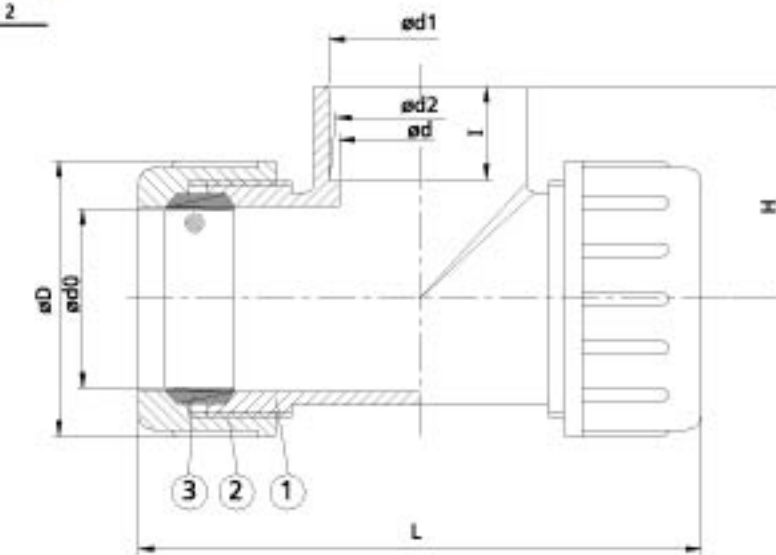
VP-200 三通快速接头 Compression Tee

- Specification: Schedule 40
- Suitable for instant and emergent piping system repairment.
- Suitable for IPS standard plastic / metal piping system
- 规格：Schedule 40
- 适用于紧急修复或无法断水时之换管工程
- 适用于IPS规格之塑胶、金属管路系统

Type 品号	Size 尺寸	Standard 规格	Material 材质	Seat 垫圈	End Type 接口
VP-200	1/2"~2"	ANSI	PVC	NR	Socket, Threaded
VP-201	1/2"~2"	ANSI	CPVC	NR	Socket, Threaded

SIZE	15mm (1/2")	20mm (3/4")	25mm (1")	32mm (1-1/4")	40mm (1-1/2")	50mm (2")
Nom. D	47	52	61	72	80	92
D1	30	36	43	51	58	71
d	16.5	20.5	28	35	42.5	54
d0	21	26.47	33.2	42	48	60.1
d1	21.54	26.87	33.65	42.42	48.56	60.63
d2	21.23	26.57	33.27	42.04	48.11	60.17
L	127	132	143.5	159	171.5	189
H	36.5	44.5	55	61	68.5	71
I	22.22	26	31.6	34.7	37.9	31.3
NPT thd./in.	14	14	11.5	11.5	11.5	11.5

NO.	PART	MATERIAL	QTY
1	BODY	UPVC, CPVC	1
2	UNION NUT	UPVC, CPVC	2
3	SEAT	NR	2

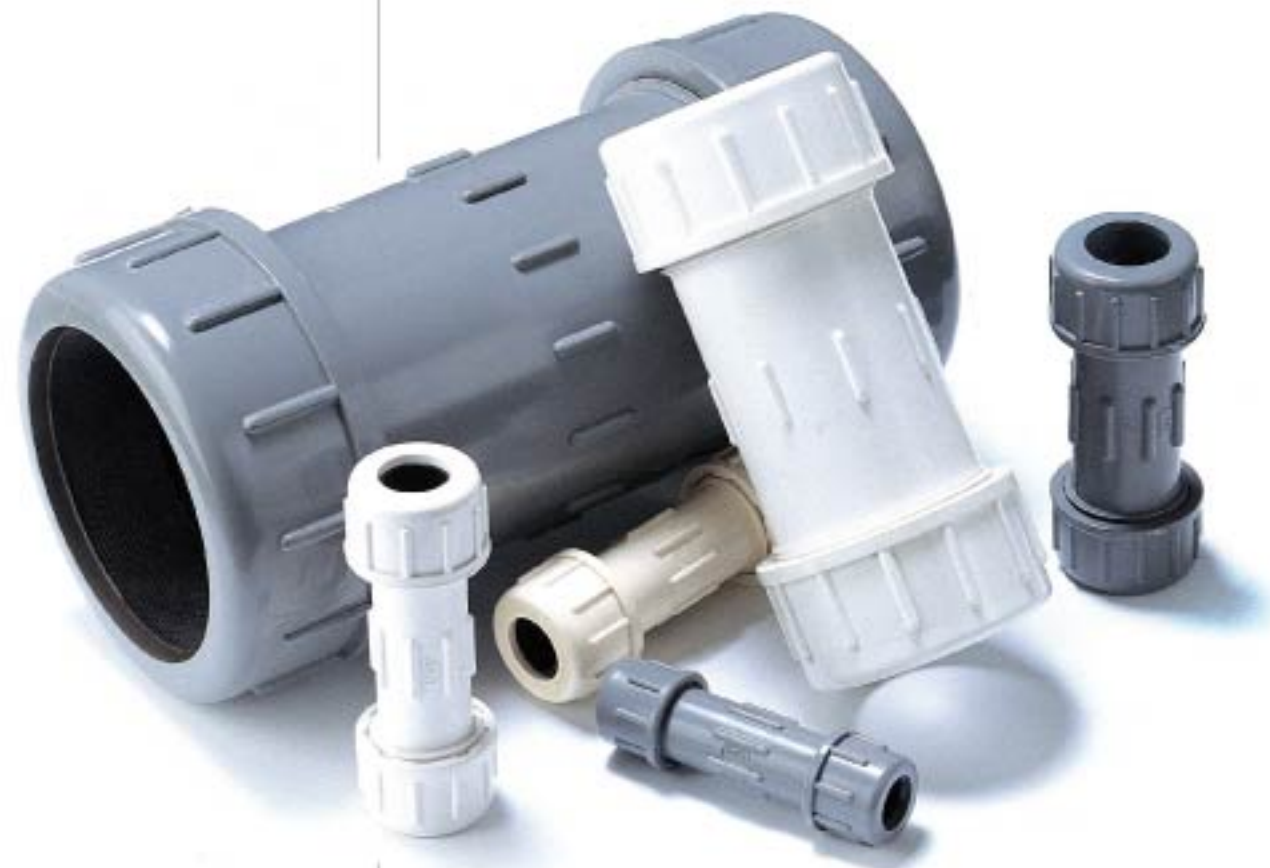


VP-200 Series

VP-210 快速接头 Compression Coupling

- Specification: Schedule 40 / CTS
- Suitable for instant and emergent piping system repairment.
- Suitable for IPS / CTS standard plastic piping system
- 规格: Schedule 40 / CTS
- 适用于紧急抢修或无法停机时之接管工程
- 适用于IPS或CTS钢管规格之塑胶管路系统

Type 品号	Size 尺寸	Standard 规格	Material 材质	Seat 垫座
VP-210	3/8"~6"	ANSI, JIS, BS (IPS)	PVC	NR
VP-211	1/2"~1"	ANSI (CTS)	CPVC	NR



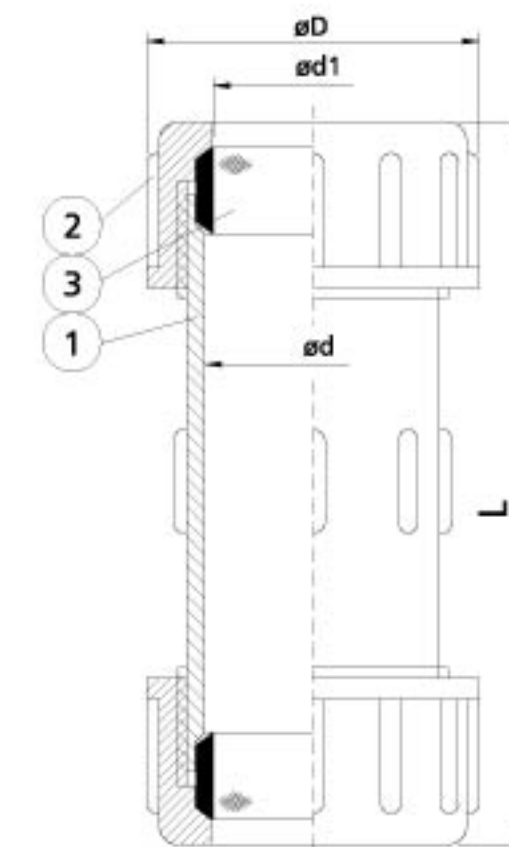
I.P.S.DIM.

Nom.	SIZE	10mm (3/8")	15mm (1/2")	20mm (3/4")	25mm (1")	32mm (1-1/4")	40mm (1-1/2")	50mm (2")	65mm (2-1/2")	80mm (3")	100mm (4")	150mm (6")
D		33	47	53	61	73	80	92	115	134	161	223
d		18	23	30	36	46	52	65	64	92	118	174
d1	JIS	17.8	21.8	25.8	31.8	37.8	47.8	59.8	75.8	88.8	113.8	166.0
	ANSI	16.8	21.0	26.47	33.2	42.0	48.0	60.1	72.8	88.7	114.1	168.0
	BS	16.8	21.0	26.4	33.2	41.8	47.9	60.0	75.0	88.5	113.9	167.8
L		118	128	135	142	153	173	195	252	276	303	285

NO.	PART	MATERIAL	QTY
1	BODY	UPVC, CPVC	1
2	UNION NUT	UPVC, CPVC	2
3	SEAT	NR	2

C.T.S.DIM.

Nom.	SIZE	15mm (1/2")	20mm (3/4")	25mm (1")
D		33	47	53
d		18	24	30
d1		16.08	22.45	28.83
L		114	127	135

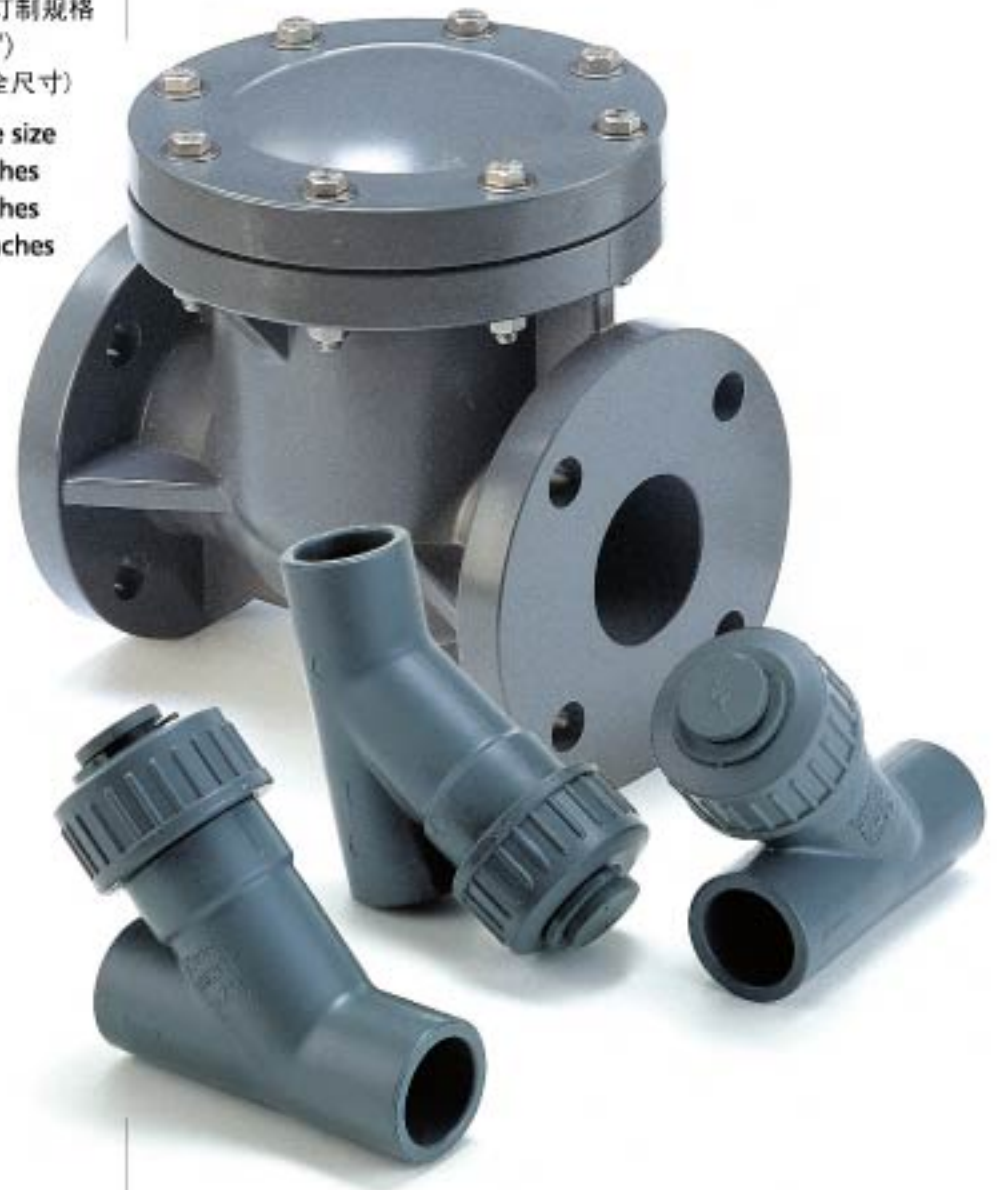


VP-220 T (Y) 型过滤器

T (Y) type Strainer

- Screen options include several mesh sizes with easy and rapid interchangeability.
- Screen specification:
T type-SUS 304 / 316L,
60 / 40 / 20 mesh
Y type-60 / 40 / 20 mesh

- 滤网拆卸清洗方便
- 滤网规格：
T型-SUS 304 / 316,
60 / 40 / 20 mesh
PP/PVC/CPVC
2~8mm 孔目等客户定制规格
Y型-PE / 20 mesh (1/2"~2")
SUS / 40 / 60 mesh (全尺寸)
- 注：Comparative Particle size
20 Mesh ≈ 0.034 inches
40 Mesh ≈ 0.015 inches
60 Mesh ≈ 0.0092 inches



Type	Size	Standard	Material	Gasket / Seal	End type
品号	尺寸	规格	材质	垫片	接口
VP-220 T type	2"~8"	ANSI, JIS	PVC	EPDM, PTFE, FPM	Flanged
VP-220 Y type	1/2"~2"	ANSI, JIS, DIN	PVC	NR	Union, Socket, Flanged
VP-221 T type	2"~8"	ANSI, JIS	CPVC	EPDM, PTFE, FPM	Flanged
VP-221 Y type	1/2"~2"	ANSI, JIS, DIN	CPVC	NR	Union, Socket, Flanged

T-type Strainer DIM.

Nom.	SIZE	50mm	65mm	80mm	100mm	150mm	200mm
		(2")	(2-1/2")	(3")	(4")	(6")	(8")
JIS	D	155	175	185	210	285	330
	D1	120	140	150	175	240	290
	n-ø	4-ø19	4-ø19	8-ø19	8-ø19	8-ø23	12-ø23
ANSI	D	152	178	191	228	285	343
	D1	121	140	152	191	241	298
	n-ø	4-ø19	4-ø19	4-ø19	8-ø19	8-ø22	8-ø22
DIN	D	165	185	200	220	285	343
	D1	125	145	160	180	240	295
	n-ø	4-ø18	4-ø18	8-ø18	8-ø18	8-ø22	8-ø22
L		200	240	260	300	400	500
H		166	170.5	170	216	286	336
T		20	22	22	24	26	30

NO.	PART	QTY	MATERIAL
1	BODY	1	UPVC, CPVC
2	BONNET	1	UPVC, CPVC
3	90° ELL	1	UPVC, CPVC
4	INNER BODY	1	UPVC, CPVC
5	OUTER BODY	1	UPVC, CPVC
6	GASKET	1	EPDM, FPM
7	FILTER	1	SUS304 or 316L

Y-type Strainer (Flanged) DIM.

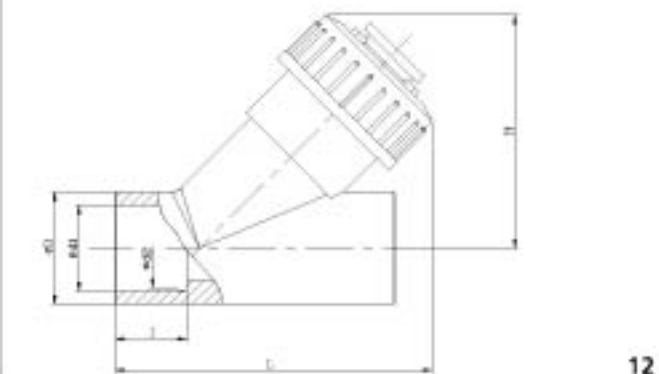
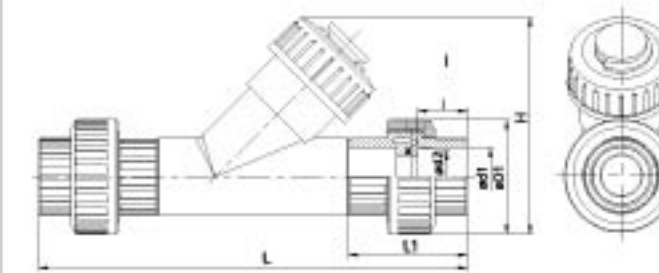
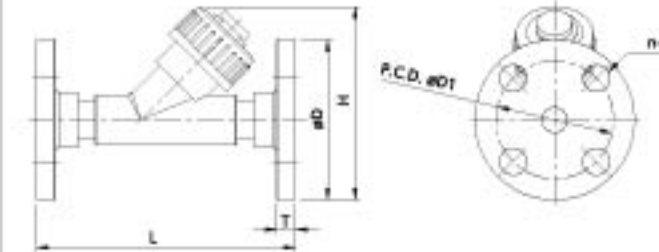
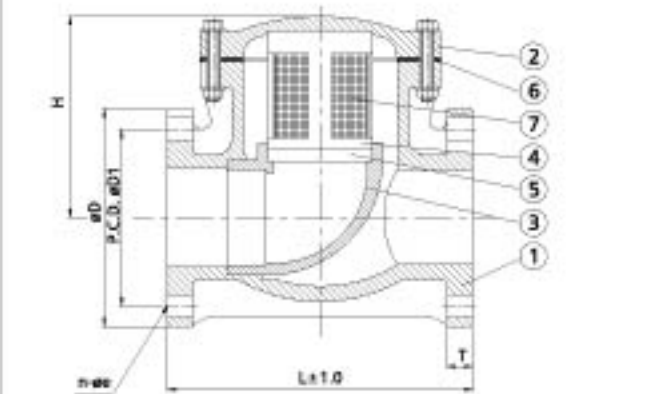
Nom.	SIZE	15mm	20mm	25mm	32mm	40mm	50mm
		(1/2")	(3/4")	(1")	(1-1/4")	(1-1/2")	(2")
JIS	D	95	103	125	135	140	155
	D1	70	75	90	100	105	120
	L	180	175	202	245	247	292
ANSI	D	89	96	108	117	127	152
	D1	61	70	79	89	99	121
	L	154	170	200	245	250	290
H		119	131	157	190	196	224
T		11.1	12.7	14.3	16	17.5	19.1
n-ø		4-ø16	4-ø16	4-ø16	4-ø16	4-ø16	4-ø19

Y-type Strainer (Union) DIM.

Nom.	SIZE	15mm	20mm	25mm	32mm	40mm	50mm
		(1/2")	(3/4")	(1")	(1-1/4")	(1-1/2")	(2")
ANSI	ø1	21.54	26.87	33.65	42.42	48.56	60.63
	ø2	21.23	26.57	33.27	42.04	48.11	60.17
	L	22.22	25.4	28.58	31.75	34.93	38.1
AN	ø1	22.3	28.3	32.33	38.43	48.46	60.56
	ø2	21.7	25.7	31.67	37.57	47.54	59.64
	L	22.2	25.6	28.6	31.6	34.6	38.1
DIN	ø1	20.3	25.3	32.3	40.3	50.3	63.3
	ø2	20.1	25.1	32.1	40.1	50.1	63.1
	L	16	19	22	26	31	38
D1		46	55	66	82	98	120
L		192	221	248	325	353	372
L1		54	62	69	85	89	95
H		92	111	128	160	170	209

Y-type Strainer (Socket) DIM.

Nom.	SIZE	15mm	20mm	25mm	32mm	40mm	50mm
		(1/2")	(3/4")	(1")	(1-1/4")	(1-1/2")	(2")
ANSI	ø1	21.23	26.57	33.27	42.04	48.11	60.17
	ø2	21.54	26.87	33.65	42.42	48.56	60.63
	L	22.22	25.4	28.58	31.75	34.93	38.1
D1		39	39	46	61	61	77
L		85	109	127	170	170	193
H		66.5	77	80.7	122.7	122.7	143.8



VP-230 伸缩管 Expansion Joint

● Suitable for straight run system with length over 30m, and with temperature varying over 17°C (30°F)

● 适用直管长超过30m且流体温度变化量超过17°C (30°F) 的环境

● 安装时, 依当时温度设定伸缩管上温度刻度即可, 安装方便.

伸缩管伸缩距离: 150mm

$$\Delta L = Y (T_{max} - T_{min}) L$$

T max: 最高温度 (°F or °C)

T min: 最低温度 (°F or °C)

Y: 热膨胀系数

CPVC (Type IV Grade I)

$$3.4 \times 10^{-5} \text{ in / in / } ^\circ\text{F}$$

$$6.3 \times 10^{-5} \text{ cm / cm / } ^\circ\text{C}$$

PVC (Type I Grade I)

$$2.9 \times 10^{-5} \text{ in / in / } ^\circ\text{F}$$

L: 管道长度 (in or cm)

ΔL : 管热膨胀距离 (in or cm)

ΔL (单位: mm)

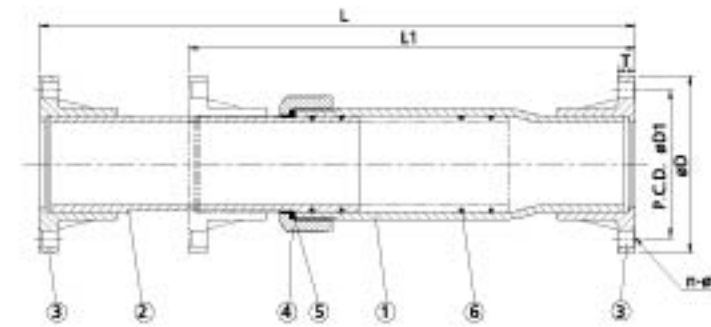
150 = 所需安装伸缩管数量



Type 型号	Size 尺寸	Standard 标准	Material 材质	O-ring O环	End type 接口
VP-230	1/2"~2"	ANSI	PVC	EPDM, FPM	Socket, Threaded
VP-230 Fabricated	2-1/2"~12"	ANSI, JIS	PVC	EPDM, FPM	Flanged
VP-231	1/2"~2"	ANSI	CPVC	EPDM, FPM	Socket, Threaded
VP-231 Fabricated	2-1/2"~12"	ANSI, JIS	CPVC	EPDM, FPM	Flanged

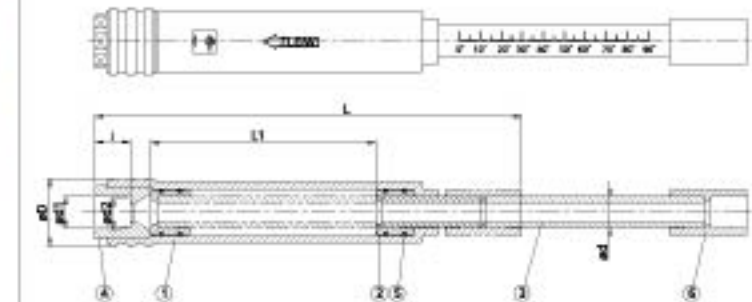
Nom.	SIZE	65mm	80mm	100mm	150mm	200mm	250mm	300mm
		(2-1/2")	(3")	(4")	(6")	(8")	(10")	(12")
JIS	D	175	185	210	280	330	400	445
	D1	140	150	175	240	290	355	400
	n-øe	4-ø19	8-ø19	8-ø19	8-ø23	12-ø23	12-ø25	16-ø25
ANSI	D	178	191	229	280	343	406	481
	D1	140	152	191	241	295	362	432
	n-øe	4-ø19	4-ø19	8-ø19	8-ø22	8-ø22	12-ø25	12-ø25
L		565	580	680	770	835	880	1050
L1		415	430	530	620	685	730	900
T	JIS	24	25	28	32	36	42	42
	ANSI	22	22	22	26	28	30	30

NO.	PART	MATERIAL	QTY
1	OUTER BODY	UPVC, CPVC	1
2	INNER BODY	UPVC, CPVC	1
3	FLANGE	UPVC, CPVC	2
4	UNION NUT	UPVC, CPVC	1
5	GLAND	UPVC, CPVC	1
6	O-RING	EPDM, FPM	3



Nom.	SIZE	15mm	20mm	25mm	32mm	40mm	50mm
		(1/2")	(3/4")	(1")	(1-1/4")	(1-1/2")	(2")
ANSI	d1	21.54	26.87	33.65	42.42	48.56	60.63
	d2	21.23	26.57	33.27	42.04	48.11	60.17
	l	24	27.4	30.58	34.75	37.93	41.1
D		46	54	64	76	76	89
d		21.3	26.7	33.4	42.2	48.3	60.3
L		290	305	320	343	350	369
L1		150	150	150	150	150	150

NO.	PART	MATERIAL	QTY
1	BODY	UPVC, CPVC	1
2	SLIDER BLOCK	UPVC, CPVC	1
3	PIPE	UPVC, CPVC	1
4	REDUCING BUSHING	UPVC, CPVC	1
5	O-RING	EPDM, FPM	2
6	COUPLING	UPVC, CPVC	1



VP-240 Unions 由令

- Suitable for any kind of piping system and easy to be installed.
- 拆装容易可适用于各种规格之管路

Type	Size	Standard	Material	O-ring	End type
品号	尺寸	规格	材质	O-环	接口
VP-240	3/8"~4"	ANSI, JIS, DIN, BS	PVC	EPDM, FPM	Socket, Threaded
VP-241	3/8"~4"	ANSI, JIS, DIN, BS	CPVC	EPDM, FPM	Socket, Threaded
VP-243	3/8"~4"	ANSI, JIS, DIN, BS	PVDF	EPDM, FPM	Socket, Threaded
VP-244	3/8"~4"	ANSI, JIS, DIN, BS	PP	EPDM, FPM	Socket, Threaded

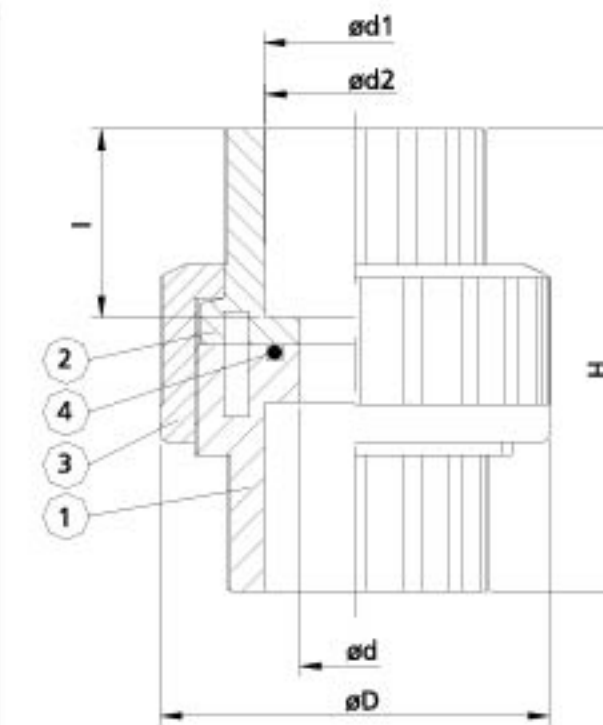


SIZE	10mm	15mm	20mm	25mm	32mm	40mm	50mm	65mm	80mm	100mm
Nom.	(3/8")	(1/2")	(3/4")	(1")	(1-1/4")	(1-1/2")	(2")	(2-1/2")	(3")	(4")
JIS	d1	18.4	22.4	26.45	32.55	38.6	48.7	60.8	76.6	89.6
	d2	17.68	21.67	25.70	31.71	37.67	47.76	59.77	75.87	88.83
	l	19.05	22.2	25.4	28.6	31.8	34.9	38.1	44.45	47.63
ANSI	d1	17.45	21.54	26.87	33.65	42.42	48.56	60.63	73.38	89.31
	d2	17.04	21.23	26.57	33.27	42.04	48.11	60.17	72.85	88.7
	l SCH80	19.05	22.22	25.4	28.58	31.75	34.93	38.1	44.45	47.63
DIN	d1	16.3	20.3	25.3	32.3	40.3	50.3	63.3	75.3	90.3
	d2	16.1	20.1	25.1	32.1	40.1	50.1	63.1	75.1	90.1
	l	16	16	19	22	26	31	38	44	51
BS	d1	17.3	21.5	26.9	33.7	42.4	48.4	60.5	75.5	89.1
	d2	17.1	21.3	26.7	33.5	42.2	48.2	60.3	75.0	88.8
	l	14.5	16.5	19.5	22.5	27	30	36	44.45	47.63
thd./in.	NPT	18	14	14	11.5	11.5	11.5	8	8	8
	BSPT	19	14	14	11	11	11	11	11	11
D	38	45	55	66	82	98	120	140	160	225
d	12	13	18	23.5	32	39	49	61	72	100
H	48	55	64	71	87	89	97	115	127	161

NO.	PART	MATERIAL	QTY
1	BODY	UPVC, CPVC, PP, PVDF	1
2	END CONNECTOR	UPVC, CPVC, PP, PVDF	1
3	UNION NUT	UPVC, CPVC, PP, PVDF	1
4	O-RING	EPDM, FPM	1

CTS DIM.

SIZE	15mm	20mm	25mm
Nom.	(1/2")	(3/4")	(1")
d1	15.72	22.10	28.47
d2	16.08	22.45	28.83
d3	12	13	18
D1	25	31	37
D2	29	46	55
L	48	54	62
l	12.70	17.78	22.86



VP-250 .260. 270 盲法兰/单片/二片式法兰

Blind Flanges / One-piece (TS) Flanges / Two-piece (Van Stone) Flanges

● Specification: JIS 10K / ANSI 150 LBS / DIN PN10 @73.4°F(23°C), Gasket type

● 规格: JIS 10K / ANSI 150LBS / DIN PN10 @73.4°F(23°C), 适用垫片接合型式

Type 品号	Size 尺寸	Standard 规格	Material 材质	End type 接口
VP-250	1/2"~12"	ANSI, JIS, DIN	PVC	Flanged
VP-251	1/2"~12"	ANSI, JIS, DIN	CPVC	Flanged
VP-260	1/2"~12"	ANSI, JIS, DIN	PVC	Socket, Threaded / Flanged
VP-261	1/2"~12"	ANSI, JIS, DIN	CPVC	Socket, Threaded / Flanged
VP-270	2"~16"	ANSI	PVC	Socket, Threaded / Flanged
VP-271	2"~16"	ANSI	CPVC	Socket, Threaded / Flanged

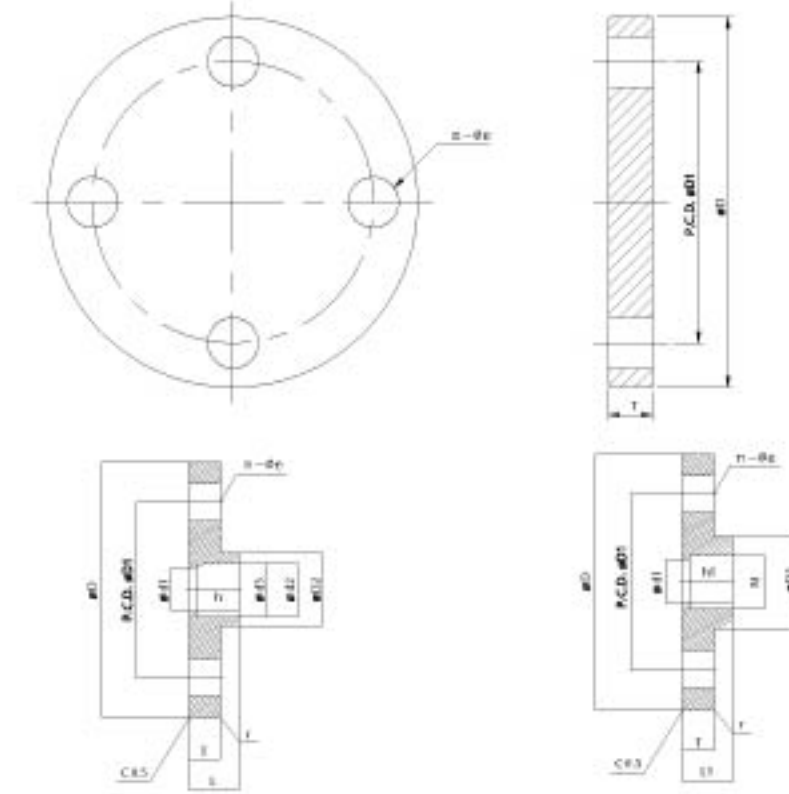


BLIND FLANGE

Nom.	SIZE	15mm (1/2")	20mm (3/4")	25mm (1")	32mm (1-1/4")	40mm (1-1/2")	50mm (2")	65mm (2-1/2")	80mm (3")	100mm (4")	125mm (5")	150mm (6")	200mm (8")	250mm (10")	300mm (12")
ANSI	D	89	98	108	117	127	152	178	191	229	254	284	343	406	481
	D1	61	70	79	89	98	121	140	152	191	216	241	296	362	432
	T	12	13	14	16	17.5	19	22	24	24	28.5	26	28	34	34
	n-ae	4-16	4-16	4-16	4-16	4-16	4-19	4-19	4-19	4-19	8-19	8-22	8-22	8-22	12-25
JIS	D	95	100	125	135	140	155	175	185	210	250	280	330	400	465
	D1	70	75	90	100	105	120	140	150	175	210	240	290	355	400
	T	14	15	15	16	16	20	22	22	22	24	25	28	30	30
	n-ae	4-15	4-15	4-19	4-19	4-19	4-19	4-19	4-19	8-19	8-19	8-23	8-23	12-23	12-25
DIN	D		105	115	140	150	165	185	200	220	250	285	343	395	445
	D1		75	85	100	110	125	145	160	180	210	240	295	350	400
	T		14	14	14	15	16	18	18	18	18	21	27	31	33
	n-ae		4-14	4-14	4-15	4-15	4-15	4-15	4-15	8-15	8-15	8-18	8-18	8-23	12-25

DIN PN 10 FLANGE

Nom.	SIZE	15mm (1/2")	20mm (3/4")	25mm (1")	32mm (1-1/4")	40mm (1-1/2")	50mm (2")	65mm (2-1/2")	80mm (3")	100mm (4")	125mm (5")	150mm (6")	200mm (8")	250mm (10")	300mm (12")
D	95	105	115	140	150	165	185	200	220	250	285	340	396	445	
D1	65	75	85	100	110	125	145	160	180	210	240	295	350	400	
D2	27	33	41	50	61	76	90	108	131	165	188	255	290	362	
D3	35	44	52	56	66	84	105	118	140	132	152	-	-	-	
d1	16	21	28	36	45	57	69	82	102	132	152	215	240	303	
d2	20.3	25.3	32.3	40.3	50.3	63.3	75.3	90.5	110.4	140.5	160.5	226.25	251.45	316.85	
d3	20.1	25.1	32.1	40.1	50.1	63.1	75.1	90.1	110.1	140.2	160.2	225.05	250.05	315.05	
h	16	19	22	26	31	38	44	51	61	76	85	119	151	194	
h1	15	16.5	19	21.4	21.4	26	28	30	33	-	-	-	-	-	
L	19	22	25	29	34	41	47	58	66	81	91	131	149	182	
L1	19	22	22	23	23	26	28	30	33	-	-	-	-	-	
T	12	14	14	14	16	16	16	18	18	18	18	21	30	32	
n-ae	4-12	4-14	4-14	4-18	4-18	4-18	4-18	4-18	8-18	8-18	8-18	8-18	8-23	12-23	12-23
N	R1/2"	R3/4"	R1"	R1-1/4"	R1-1/2"	R2"	R2-1/2"	R3"	R4"	-	-	-	-	-	-
r	r1.5	r1.5	r1.5	r1.5	r1.5	r1.5	r1.5	r1.5	r1.5	r1.5	r1.5	r1.5	r1.5	r1.5	r1.5



ANSI 150PSI FLANGE (one piece)

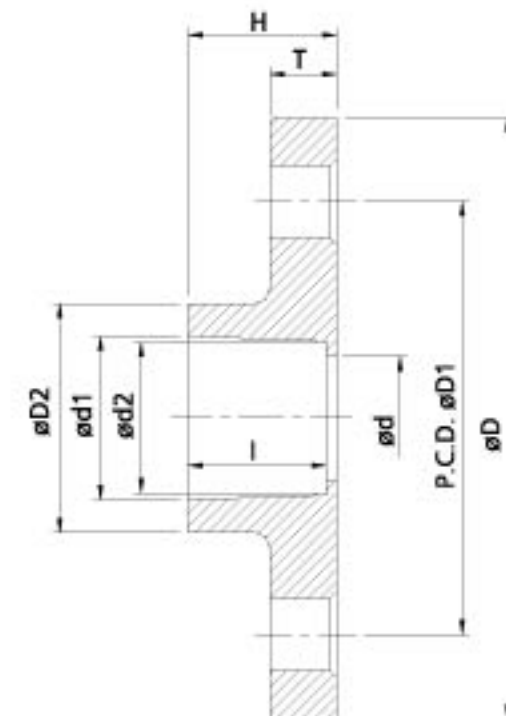
SIZE Nom.	15mm (1/2")	20mm (3/4")	25mm (1")	32mm (1-1/4")	40mm (1-1/2")	50mm (2")	65mm (2-1/2")	80mm (3")	100mm (4")	125mm (5")
D	89	98	108	117	127	152	178	191	229	254
D1	61	70	79	89	98	121	140	152	191	216
D2	33	40	48	57	65	78	92	109	139	167
d	15	25	31	40	46	57.5	70	78	111.5	136
d1	21.54	26.87	33.65	42.42	48.56	60.63	73.38	89.31	114.76	141.81
d2	21.23	26.57	33.27	42.04	48.11	60.17	72.85	88.70	114.07	141
H	25	29	31.7	35	38	41.3	47.6	50.8	61	82.5
T	11	12	14	16	17.5	19	22	24	24	28.5
l	22.22	25.4	28.58	31.75	34.93	38.1	44.45	47.63	57.15	66.7
n-øe	4-16	4-16	4-16	4-16	4-16	4-19	4-19	4-19	8-19	8-22

注: Socket diameters conform to ASTM D2467/ F439 Sch80 standard.

JIS 10K

SIZE Nom.	10mm (3/8")	15mm (1/2")	20mm (3/4")	25mm (1")	32mm (1-1/4")	40mm (1-1/2")	50mm (2")	65mm (2-1/2")	80mm (3")	100mm (4")	125mm (5")	150mm (6")	200mm (8")	250mm (10")	300mm (12")
D	90	95	100	125	135	140	155	175	185	210	250	280	330	400	445
D1	65	70	75	90	100	105	120	140	150	175	210	240	290	355	400
D2	26	31	35	42.5	48.5	61	73	90	105	132	158	186	238	289	341
d	15	18	22	25	30	41	52	67	78	100	125	146	196	247	298
d1	18.4	22.4	26.45	32.55	38.6	48.70	60.80	76.60	89.60	114.7	140.8	166.0	217.5	267.7	318.7
H	30	35	40	46	50.5	61.5	71	70	73	93	114	142	161	167	167
T	14	14	15	15	16	16	20	22	22	24	26	28	30	30	30
l	26	30	35	40	44	55	63	61	64	84	104	132	145	155	155
n-øe	4-15	4-15	4-15	4-19	4-19	4-19	4-19	4-19	8-19	8-19	8-23	8-23	12-23	12-25	16-25
1/T	1/30	1/34	1/34	1/34	1/34	1/37	1/37	1/48	1/49	1/56	1/58	1/63	1/50	1/55	1/55

● ANSI 150PSI FLANGE

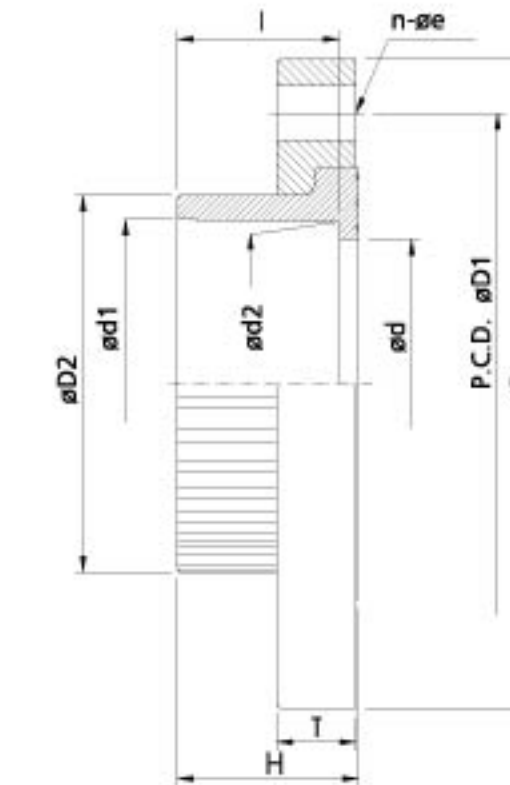


ANSI 150 PSI FLANGE (Van Stone)

SIZE Nom.	50mm (2")	65mm (2-1/2")	80mm (3")	100mm (4")	150mm (6")	200mm (8")	250mm (10")	300mm (12")	350mm (14")	400mm (16")	450mm (18")	500mm (20")	600mm (24")
D	152	178	192	229	284	343	406	481	533	600	635	699	813
D1	121	140	152	191	241	298	362	432	476	540	578	635	749
D2	76	92	108	133	191	238	296	346	395	452	507	564	675
d	51	68	77	102	156	204	256	307	340	384	430	481	590
d1	60.63	73.38	89.31	114.76	168.83	219.84	273.81	324.61	356.49	407.54	458.6	509.65	611.52
d2	60.17	72.85	88.7	114.07	168	218.7	272.67	323.47	354.84	405.67	456.69	507.49	608.84
H	43	49	54	64	85	118	150	191	195	220	280	310	346
T	20	24	26	28	32	36	42	42	50.8	60	62	63	72
l	38.1	44.45	47.63	57.15	76.2	102	123	165	169	204	254	280	305
n-øe	4-19	4-19	4-19	8-19	8-22	8-22	12-25	12-25	12-29	16-29	16-32	20-32	20-35

注: Socket diameters conform to ASTM D2467/ F439 Sch80 standard.

● ANSI 150 PSI FLANGE (Van Stone)



VP-289 橡胶垫片 Rubber Gaskets

● Specification: EPDM, NBR, FPM

● 材质: EPDM, NBR, FPM

Type 品号	Size 尺寸	Standard 规格	Material 材质
VP-289	1/2"~12"	ANSI, JIS, DIN	EPDM, NBR, FPM



JIS 10K

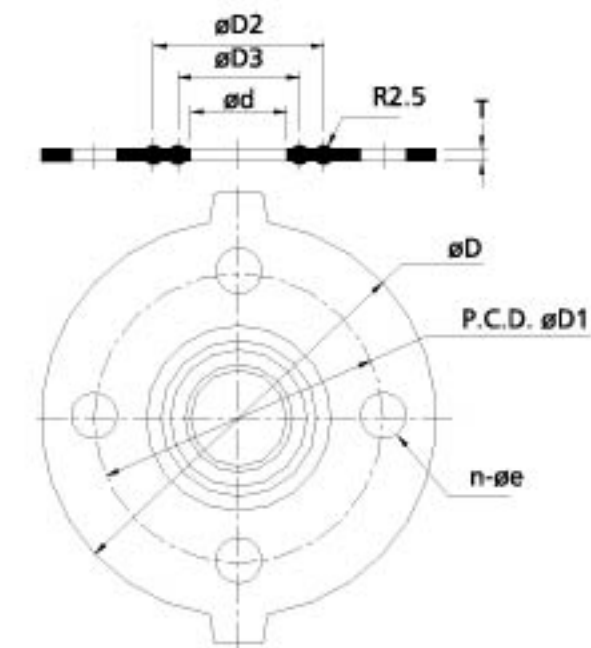
SIZE Nom.	15mm (1/2")	20mm (3/4")	25mm (1")	32mm (1-1/4")	40mm (1-1/2")	50mm (2")	65mm (2-1/2")	80mm (3")	100mm (4")	125mm (5")	150mm (6")	200mm (8")	250mm (10")	300mm (12")	350mm (14")	400mm (16")
D	93	98	123	133	138	153	173	183	208	248	278	328	398	443	485	560
D1	70	75	90	100	105	120	140	150	175	210	240	290	355	400	445	510
D2	41	47	53	65	69	83	101	112	138	166	190	247	306	352	405	482
D3	26	32	38	50	54	68	86	98	120	145	168	216	270	324	380	452
d	18	22	30	37	43	54	69	80	102	127	150	198	249	300	350	400
n-ø	4-15	4-15	4-19	4-19	4-19	4-19	4-19	8-19	8-19	8-23	8-23	12-23	12-25	16-25	16-25	16-27
T	3	3	3	3	3	3	3	3	3	3	3	3	3	3	3	3

ANSI 150 PSI

SIZE Nom.	15mm (1/2")	20mm (3/4")	25mm (1")	32mm (1-1/4")	40mm (1-1/2")	50mm (2")	65mm (2-1/2")	80mm (3")	100mm (4")	125mm (5")	150mm (6")	200mm (8")	250mm (10")	300mm (12")	350mm (14")	400mm (16")	450mm (18")	500mm (20")	600mm (24")
D	86.36	96.52	106.68	114.30	124.40	149.86	175.20	187.95	226.05	251.46	276.86	340.36	403.86	480.06	530	595	630	692	800
D1	61	70	79	89	98	121	140	152	191	216	241	298	362	432	476	540	578	635	749
D2	40.64	48.26	53.34	66.04	68.55	83.82	101.60	111.76	137.16	165.10	190.50	246.38	307.34	356.06	405	482	510	566	674
D3	25.40	33.02	38.10	50.80	53.34	68.58	86.36	99.06	119.38	144.78	167.64	215.90	269.24	325.20	380	452	472	535	644
d	17.78	22.86	30.48	38.10	43.18	53.34	68.58	81.28	101.60	127.00	148.06	198.12	248.92	299.72	350	400	450	500	600
n-ø	4-16	4-16	4-16	4-16	4-16	4-19	4-19	4-19	8-19	8-22	8-22	12-25	12-25	12-29	16-29	16-32	20-32	20-35	
T	3	3	3	3	3	3	3	3	3	3	3	3	3	3	3	3	5	5	5

DIN PN 10

SIZE Nom.	15mm (1/2")	20mm (3/4")	25mm (1")	32mm (1-1/4")	40mm (1-1/2")	50mm (2")	65mm (2-1/2")	80mm (3")	100mm (4")	125mm (5")	150mm (6")	200mm (8")	250mm (10")	300mm (12")
D	93	103	113	133	148	163	183	198	218	248	283	338	393	443
D1	65	75	85	100	110	125	145	160	180	210	240	295	350	400
D2	41	47	53	65	69	83	101	112	138	166	190	247	306	352
D3	26	32	38	50	54	68	86	98	120	145	168	216	270	324
d	18	22	30	37	43	54	69	80	102	127	150	198	249	300
n-ø	4-14	4-14	4-14	4-18	4-18	4-18	4-18	8-18	8-18	8-18	8-22	8-22	12-22	12-22
T	3	3	3	3	3	3	3	3	3	3	3	3	3	3



VP 伸缩接头 NEW Expansion Repair Coupling

● Excellent for use in repairing broken lines or when adding additional lines or fittings. Simply cut out section of broken pipe slightly longer than compressed Quick-Fix, apply glue to expand Quick-Fix to fill the gap.

● Available in 1/2"~2" Sizes

● PVC SCH. 40 Type 1 Grade 1

● IPS Spigot * IPS Socket

● Internal self-lubricating EPDM o-ring for long life and smooth movement.

● Complies with ASTM and ANSI standards.

● 适用于修复破裂的管路或新增管路、管件。只需将破裂的管路截断，截断的长度需比缩短的伸缩接头长度长一些。之后在伸缩接头涂上胶水，并将之与管路连接。

● 尺寸：1/2"~2"

● 原料：PVC TYPE 1 GRADE 1

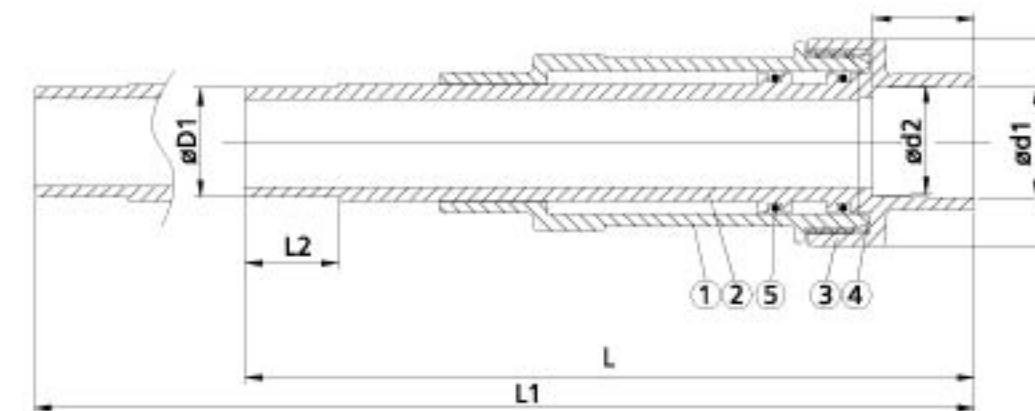
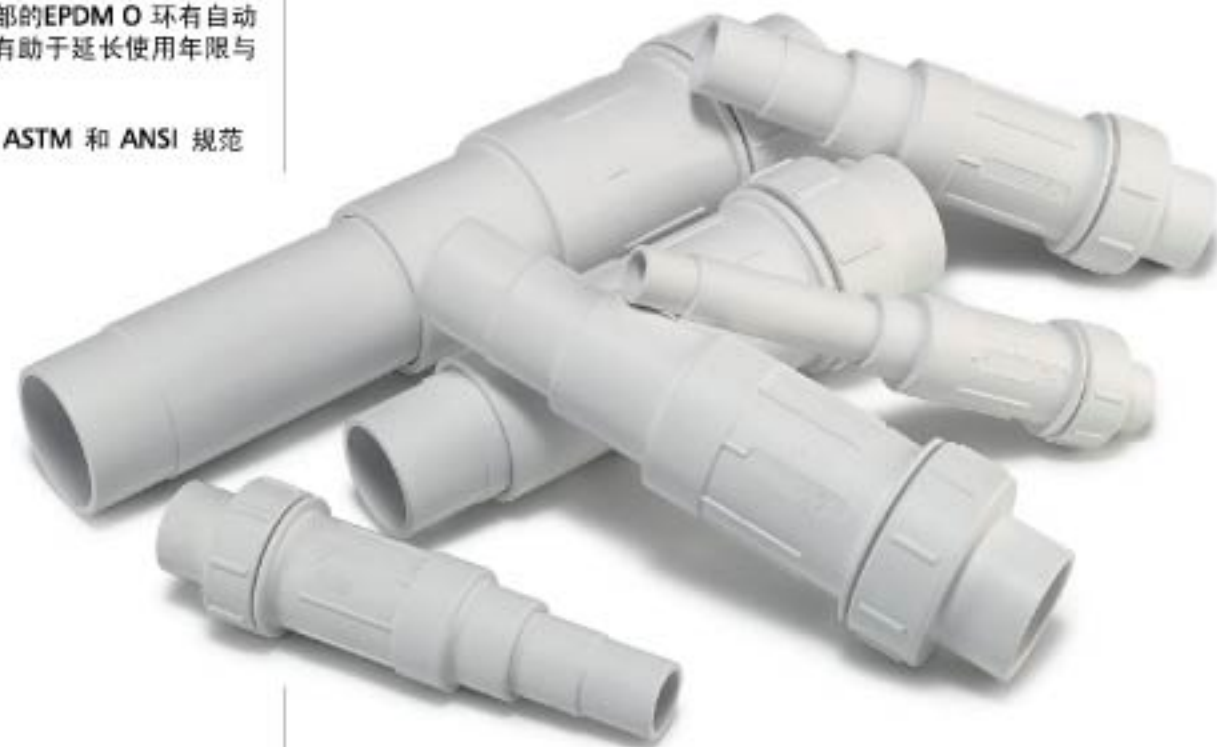
● 伸缩接头内部的EPDM O 环有自动润滑作用，有助于延长使用年限与伸缩自如。

● 符合相关之 ASTM 和 ANSI 规范

Type 品号	Size 尺寸	Standard 规格	Material 材质	O-ring O环	End type 接口
Fittings	1/2"~2"	sch.40	PVC	EPDM	Socket

SIZE Nom.	15mm (1/2")	20mm (3/4")	25mm (1")	32mm (1-1/4")	40mm (1-1/2")	50mm (2")
øD	46.1	51.5	63.3	73.7	80.5	92.6
øD1	21.34	26.67	33.4	42.16	42.26	60.32
I	20.5	27.4	31	34	35.5	37
L	171	192	223	248.5	249	286.5
L1	219.5	249.5	287.5	317	323.5	364.3
L2	20.5	26	28.6	31.8	33.4	34.5
ed1	21.54	26.87	33.65	42.42	48.56	60.63
ed2	21.23	26.57	33.27	42.04	48.1	60.17

NO.	PART	MATERIAL	QTY
1	BODY	UPVC	1
2	SLIDER	UPVC	1
3	UNION NUT	UPVC	1
4	ORING	EPDM	1
5	ORING	EPDM	2



VP-200 Series

Excellent & Advanced

VP-300 Series

Ball Valves 球阀

- VP-310, 320, 330, 340
Economy Single Union Ball Valve
经济型单边由令球阀
- VP-360, 370
Two-piece Ball Valve
两片式球阀



VP-310 .320 .330 .340 Economy Single Union Ball Valve

经济型单边由令球阀

- Specification: Schedule 40
- Lower torque and easy to operate
- Economical cost
- Suitable for swimming pool system

- 规格：Schedule 40
- 低扭力把手开关方便
- 价格实惠
- 重量轻，不占空间
- 适用于游泳池产业

Type 品号	Size 尺寸	Standard 规格	Material 材质	Seat 垫座	O-ring "O" 环	End type 接口
VP-310 / 320	1-1/2"~2"	ANSI, JIS, DIN, BS	PVC	PTFE / EPDM	EPDM	Socket, Threaded
VP-315 / 325	1-1/2"~2"	ANSI, JIS, DIN, BS	ABS+PC	PTFE / EPDM	EPDM	Socket, Threaded
VP-330 / 340	1-1/2"~2"	ANSI, JIS, DIN, BS	PVC	PTFE / EPDM	EPDM	MIPT
VP-335 / 345	1-1/2"~2"	ANSI, JIS, DIN, BS	ABS+PC	PTFE / EPDM	EPDM	MIPT

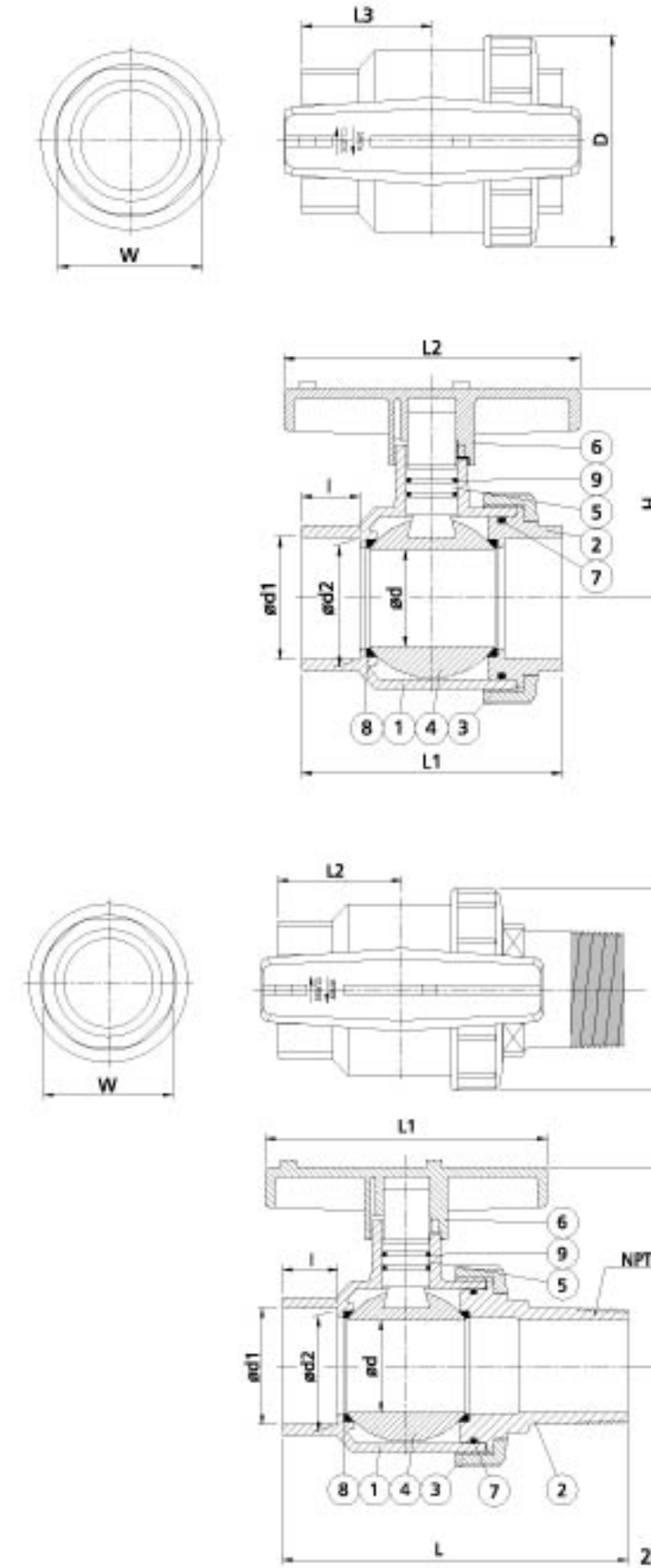


SIZE	40mm (1-1/2")	50mm (2")	
JIS	d1	48.7	60.8
	d2	47.76	59.77
ANSI	d1	48.56	60.63
	d2	48.11	60.17
DIN	d1	50.3	63.3
	d2	50.1	63.1
BS	d1	48.4	60.5
	d2	48.2	60.3
thd. / in	BSPT	11	11
	NPT	11.5	11.5
D	87.5	105	
d	38.5	48	
L1	115	130	
L2	121	147	
L3	56.5	64.7	
H	85	104	
I	27.79	29.46	
W	60	70	

NO.	PART	MATERIAL	QTY
1	BODY	UPVC, PP+GF, ABS+PC	1
2	BODY CAP	UPVC, PP+GF, ABS+PC	1
3	UNION NUT	UPVC, PP+GF, ABS+PC	1
4	BALL	UPVC, PP+GF, ABS+PC	1
5	STEM	UPVC, PP+GF, ABS+PC	1
6	HANDLE	ABS	1
7	UNION O-RING	EPDM, VITON	1
8	SEAT SEAL	EPDM, FPM	2
9	STEM O-RING	EPDM, VITON	2

SIZE	40mm (1-1/2")	50mm (2")	
JIS	d1	48.7	60.8
	d2	47.76	59.77
ANSI	d1	48.56	60.63
	d2	48.11	60.17
DIN	d1	50.3	63.3
	d2	50.1	63.1
BS	d1	48.4	60.5
	d2	48.2	60.3
thd. / in	BSPT	11	11
	NPT	11.5	11.5
D	87.5	105	
d	38.5	48	
L	168	180	
L1	121	147	
L2	56.5	64.7	
H	85	104	
W	60	70	
I	27.79	29.46	

NO.	PART	MATERIAL	QTY
1	BODY	UPVC, PP+GF, ABS+PC	1
2	BODY CAP	UPVC, PP+GF, ABS+PC	1
3	UNION NUT	UPVC, PP+GF, ABS+PC	1
4	BALL	UPVC, PP+GF, ABS+PC	1
5	STEM	UPVC, PP+GF, ABS+PC	1
6	HANDLE	ABS	1
7	UNION O-RING	EPDM, FPM	1
8	SEAT SEAL	EPDM, PTFE	2
9	STEM O-RING	EPDM, FPM	2



VP-360 .370 两片式球阀

Two-piece Ball Valve

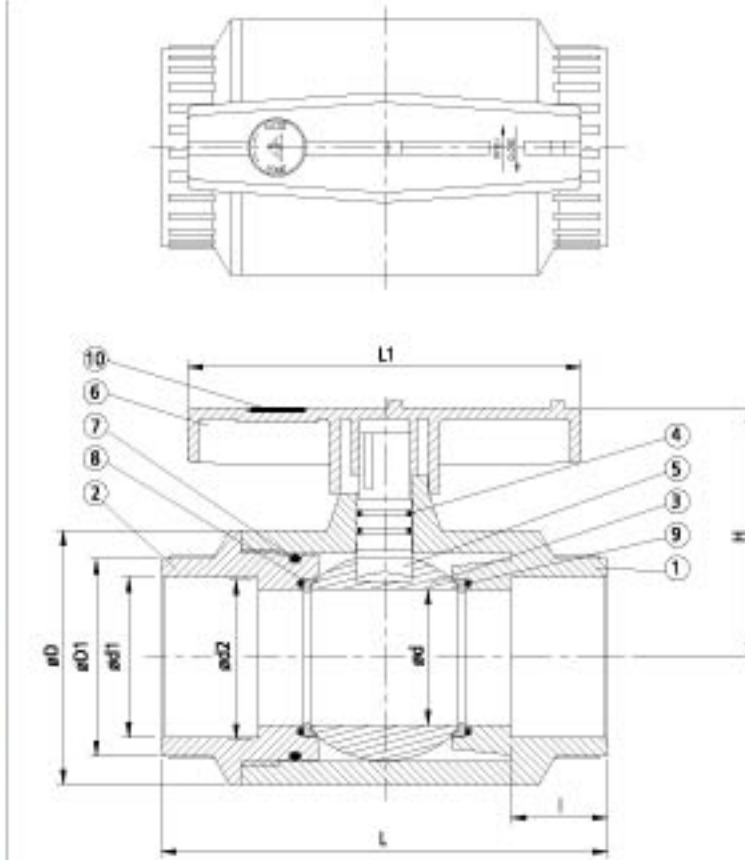
- Pressure rating: 150 PSI
- Lower torque and easy to operate
- Full port design
- Economical cost
- 工作压力：150 PSI
- 低扭力把手开关方便
- 全流量设计、价格实惠

Type 型号	Size 尺寸	Standard 规格	Material 材质	Seat 垫座	O-ring “O”环	End type 接口
VP-360	2-1/2"~4"	ANSI, JIS, BS	PVC	PTFE	EPDM, FPM	Socket, Threaded
VP-361	2-1/2"~4"	ANSI, JIS, BS	CPVC	PTFE	EPDM, FPM	Socket, Threaded
VP-365	2-1/2"~4"	DIN	ABS	PTFE	EPDM, FPM	Socket, Threaded
VP-370	2-1/2"~4"	ANSI, JIS, BS	PVC	EPDM	EPDM, FPM	Socket, Threaded
VP-371	2-1/2"~4"	ANSI, JIS, BS	CPVC	EPDM	EPDM, FPM	Socket, Threaded
VP-375	2-1/2"~4"	DIN	ABS	EPDM	EPDM, FPM	Socket, Threaded



SIZE	65mm (2-1/2")	80mm (3")	100mm (4")	
JIS	d1	76.6	89.6	114.7
	d2	75.87	88.83	113.98
	l	62	63	69
ANSI	d1	73.38	89.31	114.76
	d2	72.85	88.7	114.07
	l	44.45	47.63	57.15
DIN	d1	75.3	90.3	110.4
	d2	75.1	90.1	110.1
	l	44	51	61
BS	d1	75.3	89.1	114.5
	d2	75.1	88.8	114.2
	l	44.45	47.63	57.15
D	115	134.5	190	
D1	89.5	106.8	143.5	
d	61	69	99	
L	200	227.5	300	
L1	180	224	277	
H	116	128.5	176	

NO.	PART	MATERIAL	QTY
1	BODY	UPVC, CPVC, ABS	1
2	BODY CAP	UPVC, CPVC, ABS	1
3	BALL	UPVC, CPVC, ABS	1
4	STEM O-RING	EPDM, FPM	2
5	STEM	UPVC, CPVC, ABS	1
6	HANDLE	ABS	1
7	UNION O-RING	EPDM, FPM	1
8	SEAT SEAL	EPDM, PTFE	2
9	SEAT SEAL O-RING	EPDM, FPM	2
10	CAP	ABS	1



VP-360 Series

Excellent & Advanced

VP-400 Series

Check Valves 逆止阀

- VP-410
Wafer Check Valve
单片式逆止阀
- VP-420
Economy Swing Check Valve
经济型摆动式逆止阀
- VP-430
Economy Swing Check Foot Valve
经济型摆动式终端逆止阀
- VP-440
True Union Ball Check Valve
双由令球型逆止阀
- VP-450
Swing Check Valve
工业用摆动式逆止阀
- VP-460
Ball Check Valve
单由令球型逆止阀
- VP-470
Ball Check Foot Valve
单由令球型终端逆止阀
- VP-480
In-Line Spring Check Valve
弹簧式逆止阀
- VP-490
In-Line Spring Check Foot Valve
弹簧式终端逆止阀



VP-420 .430 经济型摆动式(终端)逆止阀

Economy Swing Check (Foot) Valve

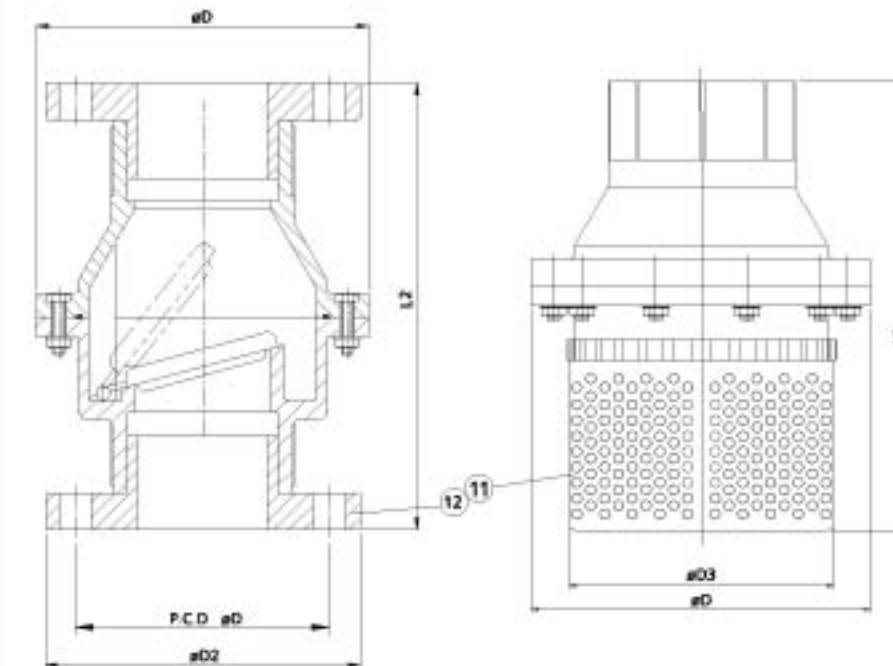
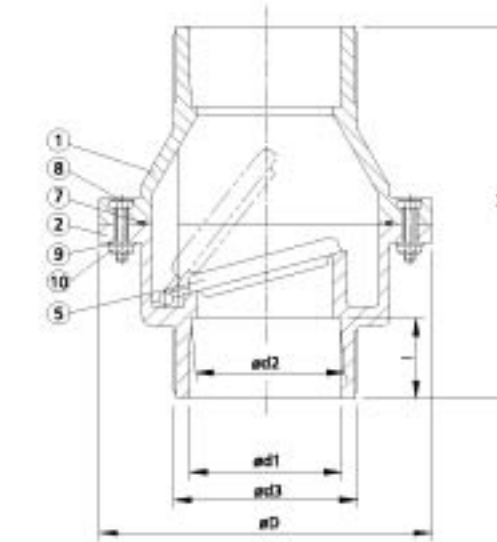
- With arrow to mark the direction of flow, and to be installed according to flow direction.
- Vertical installation: the arrow should be installed upward.
- Horizontal installation: the arrow mark should be shown on top to indicate the flow direction.
- 箭头标示水流方向，请依实际水流方向安装
- 垂直装配时指示箭头方向朝上安装
- 水平装置时指示箭头位置必须在正上方

Type 型号	Size 尺寸	Standard 规格	Material 材质	Gasket 垫片	O-ring O形环	End type 接口
VP-420	3"-4"	ANSI, JIS, DIN	PVC	EPDM, FPM	EPDM, FPM	Socket, Threaded, Flanged
VP-430	3"-4"	ANSI, JIS, DIN	PVC	EPDM, FPM	EPDM, FPM	Socket, Threaded, Flanged



NO.	PART	MATERIAL	QTY
1	UPPER BODY	UPVC	1
2	LOWER BODY	UPVC	1
5	SHEET GASKET	EPDM, FPM	1
7	O-RING	EPDM, FPM	1
8	BOLT	SUS 304	10
9	WASHER	SUS 304	10
10	NUT	SUS 304	10
11	FILTER	UPVC	1
12	FLANGE	UPVC	2

Nom.	SIZE		
	80mm (3")	100mm (4")	
JIS	D1	150	175
	d1	89.60	114.7
	d2	88.83	113.98
	l	47.63	57.15
ANSI	D1	152	191
	d1	89.31	114.76
	d2	88.70	114.07
	l	47.63	57.15
DIN	d1	90.3	110.4
	d2	90.1	110.1
	l	51	61
thd / in	NPT	8	8
	BSPT	11	11
D		196	210
D2		185	210
D3		153	153
d3		108	133
L1		221	271
L2		260	300
L3		275	320



VP-440 双由令球型逆止阀

True Union Ball Check Valve

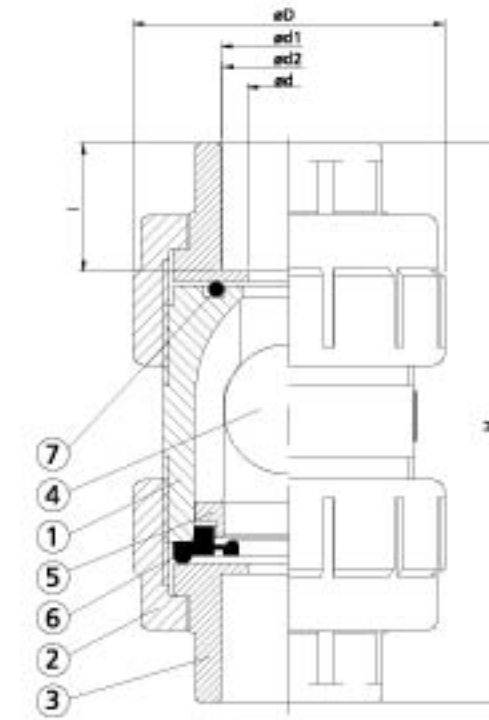
- Minimum flow pressure: 5 PSI
- Vertically installed, the arrow mark should be upward.
- True union end type
- Easy maintenance
- Ball sealing design, and to be able to seal hermetically.
- 工作压力：150 PSI
- 最低开启压力：5 PSI
- 依流向箭头指示垂直安装
- 球体逆止设计，密闭性佳

Type 品号	Size 尺寸	Standard 规格	Material 材质	Seat 垫座	O-ring O环	End type 接口
VP-440	1/2"~2"	ANSI, JIS, DIN	PVC	EPDM, FPM, NBR	EPDM, FPM	Socket, Threaded
VP-441	1/2"~2"	ANSI, JIS, DIN	CPVC	EPDM, FPM, NBR	EPDM, FPM	Socket, Threaded
VP-443	1/2"~2"	ANSI, JIS, DIN	PVDF	EPDM, FPM, NBR	EPDM, FPM	Socket, Threaded
VP-444	1/2"~2"	ANSI, JIS, DIN	PP	EPDM, FPM, NBR	EPDM, FPM	Socket, Threaded



SIZE	15mm (1/2")	20mm (3/4")	25mm (1")	25mm (1-1/4")	40mm (1-1/2")	50mm (2")
JIS						
d1	22.3	26.3	32.33	38.6	48.46	60.56
d2	21.7	25.7	31.67	37.67	47.54	59.44
l	22.2	25.4	28.6	31.75	34.9	38.1
ANSI						
d1	21.45	26.87	33.65	42.42	48.56	60.63
d2	21.23	26.57	33.27	42.04	48.11	60.17
l	22.22	25.4	28.58	31.75	34.93	38.1
DIN						
d1	20.3	25.3	32.3	40.3	50.3	63.3
d2	20.1	25.1	32.1	40.1	50.1	63.1
l	16	19	22	26	31	38
thd./in						
NPT	14	14	11.5	11.5	11.5	11.5
BSPT	14	14	11	11	11	11
D	50	62	72	97	97	107
d	13.3	20	25	25	40	50
H	95	110	120.1	156.5	156.5	183

NO.	PART	MATERIAL	QTY
1	BODY	UPVC, CPVC, PP, PVDF	1
2	UNION NUT	UPVC, CPVC, PP, PVDF	2
3	END CONNECTOR	UPVC, CPVC, PP, PVDF	2
4	BALL	UPVC, CPVC, PP, PVDF	1
5	GLAND	UPVC, CPVC, PP, PVDF	1
6	SEAL	EPDM, FPM, NBR	1
7	O-RING	EPDM, FPM	1



VP-450 工业用摆动式逆止阀

Swing Check Valve

- Minimum flow pressure: 2 PSI
- Install vertically or horizontally, with arrow to indicate flow direction
- Easy to clean by removing the top bonnet.
- Less on-line down time for maintenance
- To avoid blocking, it is recommended to install filter in front of the valve.
- 工作压力 : 1/2" - 3" 150 PSI
4" - 6" 100 PSI
8" 78 PSI
- 最低开启压力 : 2 PSI
- 依流向箭头指示水平或垂直安装
- 可直接清理阀体, 无须自管路拆除
- 前端管路建议安装过滤器, 以防阀门被阻塞

Type 品名	Size 尺寸	Standard 规格	Material 材质	Gasket 垫片	End type 接口
VP-450	1/2"~8"	ANSI, JIS, DIN	PVC	EPDM, FPM, NBR, PTFE	Flanged
VP-451	1/2"~8"	ANSI, JIS, DIN	CPVC	EPDM, FPM, NBR, PTFE	Flanged
VP-453	1/2"~8"	ANSI, JIS, DIN	PVDF	EPDM, FPM, NBR, PTFE	Flanged
VP-454	1/2"~8"	ANSI, JIS, DIN	PP	EPDM, FPM, NBR, PTFE	Flanged



SIZE	15mm (1/2")	20mm (3/4")	25mm (1")	32mm (1-1/4")	40mm (1-1/2")	50mm (2")	65mm (2-1/2")	80mm (3")	100mm (4")	150mm (6")	200mm (8")
JIS											
D	100	100	125	140	140	155	175	185	210	285	343
D1	70	75	90	100	105	120	140	150	175	240	290
L	140	140	160	180	180	200	240	260	300	400	500
n-ee	4-ø15	4-ø15	4-ø19	4-ø19	4-ø19	4-ø19	4-ø19	8-ø19	8-ø19	8-ø23	12-ø23
ANSI											
D	100	100	108	127	127	152	178	191	229	285	343
D1	60	70	79	88.9	98	121	140	152	191	241	298
L	140	140	160	180	180	200	240	260	300	400	500
n-ee	4-ø16	4-ø16	4-ø16	4-ø16	4-ø16	4-ø19	4-ø19	4-ø19	8-ø19	8-ø22	8-ø22
DIN											
D	100	100	115	150	150	165	185	200	220	285	343
D1	65	75	85	100	110	125	145	160	180	240	295
L	140	140	160	180	180	200	240	260	300	400	500
n-ee	4-ø14	4-ø14	4-ø18	4-ø18	4-ø18	4-ø18	4-ø18	8-ø18	8-ø18	8-ø23	8-ø23
T	15	15	17	19	19	20	22	22	24	26	30
H	93	93	117.5	136	137	165	170.5	170	216	286	336

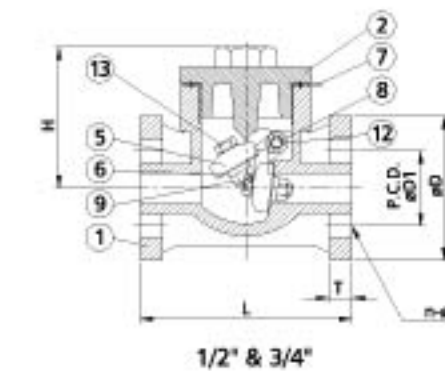
NO.	PART	MATERIAL	QTY
1	BODY	HI-PVC, UPVC, CPVC, PP, PVDF	1
2	BONNET	HI-PVC, UPVC, CPVC, PP, PVDF	1
3	DISC	HI-PVC, UPVC, CPVC, PP, PVDF	1
4	DISC HOLDER	HI-PVC, UPVC, CPVC, PP, PVDF	1
5	SWAY ARM	HI-PVC, UPVC, CPVC, PP, PVDF	1
6	DISK GASKET	EPDM, FPM, NBR, PTFE	1
7	GASKET	EPDM, FPM, NBR, PTFE	1
8	SHAFT	PTFE	1
9	DISK NUT	HI-PVC, UPVC, CPVC, PP, PVDF	1
10	DISK WASHER	HI-PVC, UPVC, CPVC, PP, PVDF	1
11	SHEET GASKET	EPDM, FPM, NBR, PTFE	1
12	SHEET BOLT	HI-PVC, UPVC, CPVC, PP, PVDF	1
13	DISC BOLT	HI-PVC, UPVC, CPVC, PP, PVDF	4-8
14	BOLT SETS	STEEL, SUS 304	8-12

Swing check Valve 使用参考压力和温度关系

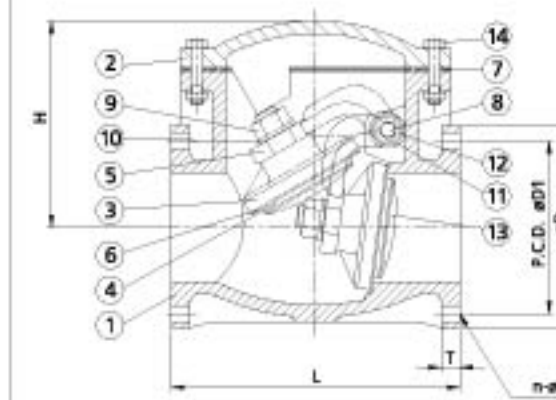
VP-450 Table of Temperature / Water Pressure (Reference)

Unit: kgf / cm²

Material	U - PVC		P P				P V D F		
	EPDM	FPM	EPDM	PTFE	PTFE	PTFE	PTFE		
SIZE	0~50	0~50	-20~60	61~80	-20~60	61~80	-20~60	61~80	81~100
15 (1/2")	7	6	7	6	6	5	6	5	4
20 (3/4")	7	6	7	6	6	5	6	5	4
25 (1")	7	6	7	6	6	5	6	5	4
40 (1 1/2")	7	6	7	6	6	5	6	5	4
50 (2")	7	6	7	6	6	5	6	5	4
65 (2 1/2")	7	6	7	6	6	5	6	5	4
80 (3")	7	5	7	6	5	4	5	4	3
100 (4")	5	5	5	4	5	4	5	4	3
125 (5")	5	4	5	4	4	3	4	3	2.5
150 (6")	5	3	5	4	3	2	3	2.5	2
200 (8")	3	3	3	2	3	2	3	2.5	2



1/2" & 3/4"



1" ~ 8"

VP-460 .470 单由令球型(终端)逆止阀

Ball Check (Foot) Valve

- Pressure rating: 1/2"~2-1/2" 150 PSI, 3"~4" 100 PSI
- Minimum flow pressure : 2~4 PSI
- Vertically installed, the arrow should be upward.
- Ball sealing design to be able to seal hermetically.
- 工作压力 : 1/2"~2-1/2" 150 PSI, 3"~4" 100 PSI
- 最低开启压力 : 2~4 PSI
- 依流向箭头指示垂直安装
- 球体逆止设计, 密闭性佳

Type 品号	Size 尺寸	Standard 规格	Material 材质	Seal 止漏垫	End type 接口
VP-460	1/2"~4"	ANSI, JIS, DIN	PVC	EPDM, FPM, NBR	Socket, Threaded
VP-461	1/2"~4"	ANSI, JIS, DIN	CPVC	EPDM, FPM, NBR	Socket, Threaded
VP-463	1/2"~4"	ANSI, JIS, DIN	PVDF	EPDM, FPM, NBR	Socket, Threaded
VP-464	1/2"~4"	ANSI, JIS, DIN	PP	EPDM, FPM, NBR	Socket, Threaded
VP-470	1/2"~4"	ANSI, JIS, DIN	PVC	EPDM, FPM, NBR	Socket, Threaded

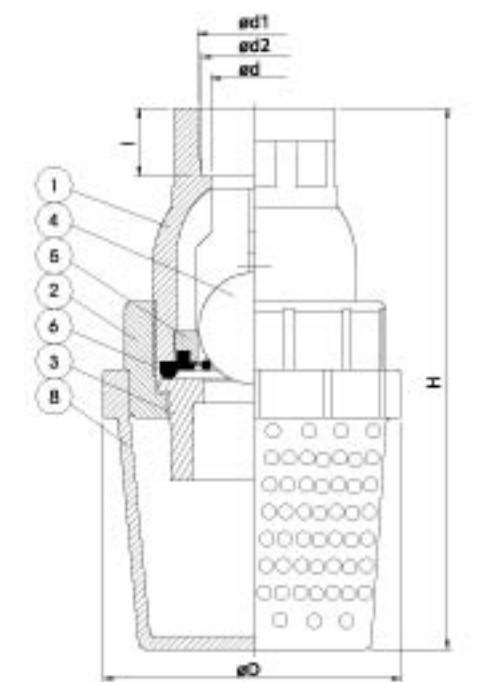
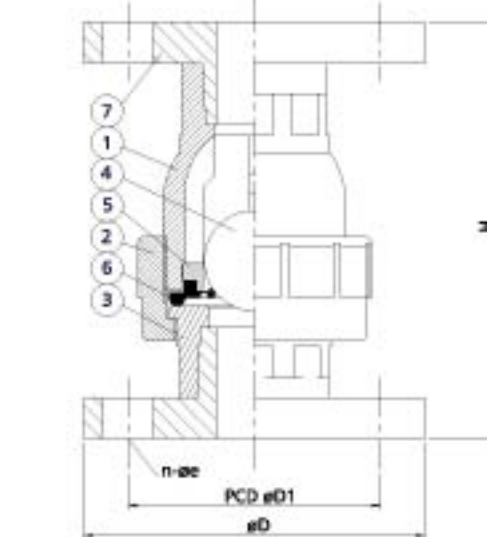
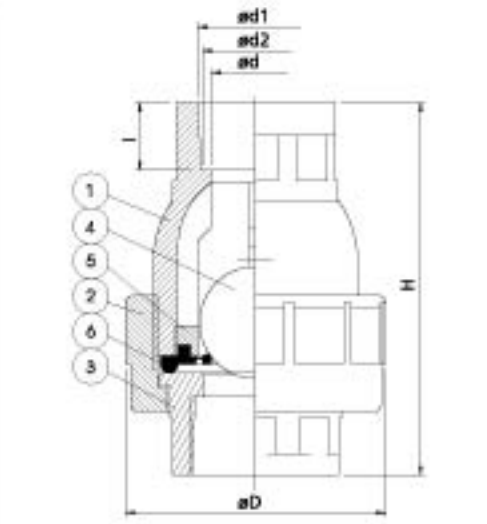


SIZE Nom.	15mm (1/2")	20mm (3/4")	25mm (1")	32mm (1-1/4")	40mm (1-1/2")	50mm (2")	65mm (2-1/2")	80mm (3")	100mm (4")
JIS	d1 22.30 d2 21.70 I 22.22	26.30 25.70 25.4	32.33 31.67 28.6	38.6 37.67 31.75	48.46 47.54 34.9	60.56 59.44 38.1	76.60 75.87 44.45	89.6 88.83 63	114.7 113.98 69
ANSI	d1 21.54 d2 21.23 I 22.22	26.87 26.57 25.40	33.65 33.27 28.58	42.42 42.04 31.75	48.56 48.11 34.93	60.63 60.17 38.10	73.38 72.85 44.45	89.31 88.7 47.63	114.76 114.07 57.15
DIN	d1 20.3 d2 20.1 I 16	25.3 25.1 19	32.3 32.1 22	40.3 40.1 26	50.3 50.1 31	63.3 63.1 38	75.3 75.1 44	90.3 90.1 51	110.4 110.1 61
thd/in	NPT 14 BSPT 14	14 14	11.5 11	11.5 11	11.5 11	11.5 11	8 8	8 8	8 8
D	50	62	71	96.8	96.8	107	163	163	225
d	13	20	25	25	40	50	70	77	102
H	93	107.5	119.5	154	154	179	263	263	321

SIZE Nom.	15mm (1/2")	20mm (3/4")	25mm (1")	32mm (1-1/4")	40mm (1-1/2")	50mm (2")	65mm (2-1/2")	80mm (3")	100mm (4")
JIS	D 95.5 D1 70 n-ae 4-15 H 111	100 75 4-15 138	14.5 90 4-19 152	134.5 100 4-19 190	140.5 105 4-19 190	155 120 4-19 219	175 140 4-19 307	184.5 150 4-19 308	209.5 175 8-19 364
ANSI	D 89 D1 60 n-ae 4-16 H 105	98 70 4-16 132	108 79 4-16 149	117 89 4-16 184	127 98 4-16 188	155 121 4-19 219	178.5 140 4-19 307	190.5 152 4-19 309	230 191 8-19 369
DIN	D 95.5 D1 65 n-ae 4-15 H 111	100 75 4-15 138	124.5 85 4-15 150	134.5 100 4-19 190	140.5 110 4-19 190	155 125 4-19 219	175 145 4-19 307	184.5 160 8-19 308	209.5 180 8-19 364

SIZE Nom.	15mm (1/2")	20mm (3/4")	25mm (1")	32mm (1-1/4")	40mm (1-1/2")	50mm (2")	65mm (2-1/2")	80mm (3")	100mm (4")
JIS	d1 22.30 d2 21.70 I 22.22	26.30 25.70 25.4	32.33 31.67 28.6	38.6 37.67 31.75	48.46 47.54 34.9	60.56 59.44 38.1	76.60 75.87 44.45	89.6 88.83 63	114.7 113.98 69
ANSI	d1 21.54 d2 21.23 I 22.22	26.87 26.57 25.40	33.65 33.27 28.58	42.42 42.04 31.75	48.56 48.11 34.93	60.63 60.17 38.10	73.38 72.85 44.45	89.31 88.7 47.63	114.76 114.07 57.15
DIN	d1 20.3 d2 20.1 I 16	25.3 25.1 19	32.3 32.1 22	40.3 40.1 26	50.3 50.1 31	63.3 63.1 38	75.3 75.1 44	90.3 90.1 51	110.4 110.1 61
thd/in	NPT 14 BSPT 14	14 14	11.5 11	11.5 11	11.5 11	11.5 11	8 8	8 8	8 8
D	60	70	83	110	110	124	154	154	178
d	13	20	25	25	40	50	70	77	102
H	138	153	164	195	195	240	310	310	382

NO.	PART	MATERIAL	QTY
1	BODY	UPVC, CPVC, PP, PVDF	1
2	UNION NUT	UPVC, CPVC, PP, PVDF	1
3	CONNECTOR	UPVC, CPVC, PP, PVDF	1
4	BALL	UPVC, CPVC, PP, PVDF	1
5	GLAND	UPVC, CPVC, PP, PVDF	1
6	SEAL	EPDM, FPM, NBR	1
7	FLANGE	UPVC, CPVC, PP, PVDF	2
8	FILTER	UPVC, CPVC, PP, PVDF	1



VP-480 .490 弹簧式(终端)逆止阀

Spring Check (Foot) Valve

- Specification: SCH 40
- To install by arrow indication
- Low cost / maintenance operation

- 规格: Schedule 40
- 依流向箭头指示安装
- 球体逆止设计, 密闭性佳

Type	Size	Standard	Material	Seal	Spring	End type
型号	尺寸	规格	材质	止漏垫	弹簧	接口
VP-480	1/2"~2"	ANSI, JIS, DIN	PVC	EPDM, FPM	SUS 304	Socket, Threaded
VP-490	1/2"~2"	ANSI, JIS, DIN	PVC	EPDM, FPM	SUS 304	Socket, Threaded

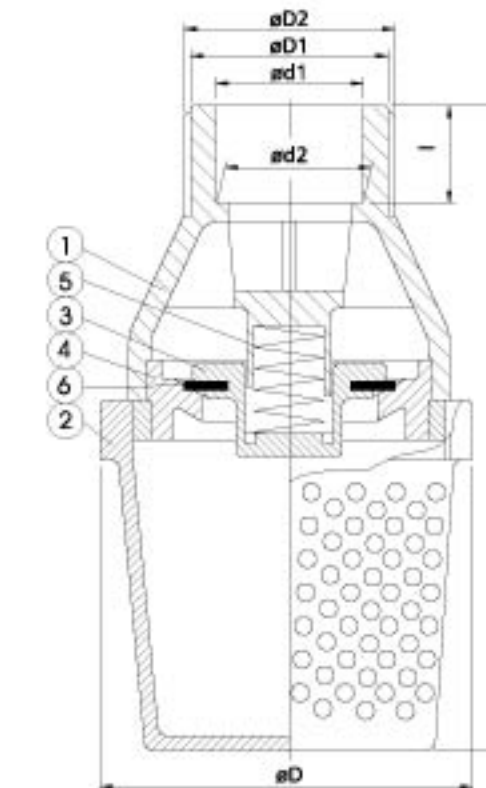
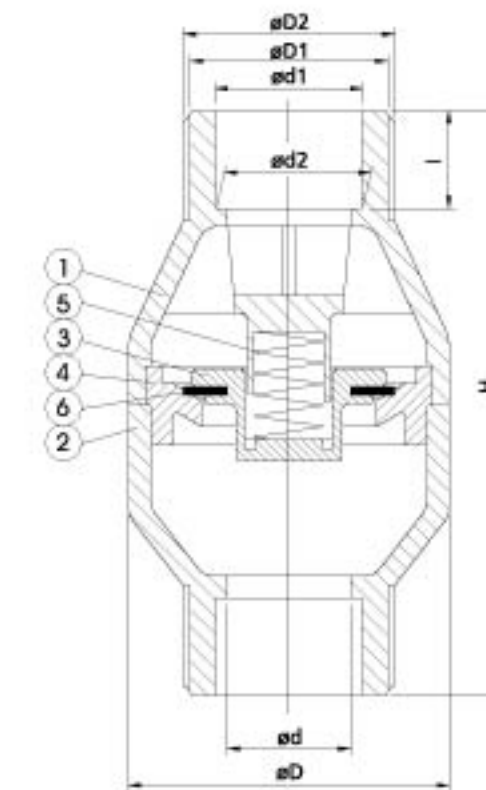


Nom.	SIZE	15mm	20mm	25mm	32mm	40mm	50mm
		(1/2")	(3/4")	(1")	(1-1/4")	(1-1/2")	(2")
JIS	d2	21.70	25.70	31.67	37.57	47.54	59.44
	d1	22.30	26.30	32.33	38.43	48.46	60.56
ANSI	d2	21.23	26.57	33.27	42.04	48.11	60.17
	d1	21.54	26.87	33.65	42.42	48.56	60.63
DIN	d2	20.1	25.1	32.1	40.1	50.1	63.1
	d1	20.3	25.3	32.3	40.3	50.3	63.3
thd./in	NPT	14	14	11.5	11.5	11.5	11.5
	BSPT	14	14	11	11	11	11
D		56	56	73	91	91	107
D1		35	35	45	52	60	73
D2		38	38	48	55	63	76
d		17	21	28	35	39	52
H		105	105	133	157	157	178
I	SCH80	17.48	18.26	22.22	23.82	27.38	29.36
	SCH40	19	20	24	25.5	29.5	31

NO.	PART	MATERIAL	QTY
1	UPPER BODY	UPVC	1
2	LOWER BODY	UPVC	1
3	SPIGOT	UPVC	1
4	CONNECTOR SEAT	UPVC	1
5	SPRING	SUS 304	1
6	SEAL	EPDM	1

Nom.	SIZE	15mm	20mm	25mm	32mm	40mm	50mm
		(1/2")	(3/4")	(1")	(1-1/4")	(1-1/2")	(2")
JIS	d2	21.70	25.70	31.67	37.57	47.54	59.44
	d1	22.30	26.30	32.33	38.43	48.46	60.56
ANSI	d2	21.23	26.57	33.27	42.04	48.11	60.17
	d1	21.54	26.87	33.65	42.42	48.56	60.63
DIN	d2	20.1	25.1	32.1	40.1	50.1	63.1
	d1	20.3	25.3	32.3	40.3	50.3	63.3
thd./in	NPT	14	14	11.5	11.5	11.5	11.5
	BSPT	14	14	11	11	11	11
D		60	60	83	83	110	124
D1		35	35	45	52	60	73
D2		38	38	48	55	63	76
d		17	21	28	35	39	52
H		123	123	147	170	170	198
I	SCH80	17.48	18.26	22.22	23.82	27.38	29.36
	SCH40	19	20	24	25.5	29.5	31

NO.	PART	MATERIAL	QTY
1	BODY	PVC	1
2	FILTER	PVC	1
3	SPIGOT	PVC	1
4	CONNECTOR SEAT	PVC	1
5	SPRING	SUS 304	1
6	SEAL	EPDM	1



Excellent & Advanced

VP-600 Series

Union Ball Valves 由令球阀

- VP-620
Single Union Ball Valve
单边由令球阀
- VP-640
Double Union Ball Valve
双边由令球阀
- VP-680, 690
Pneumatic / Electric Actuator
Double Union Ball Valve
气动式 / 电动式双由令球阀



VP-620 单边由令球阀

Single Union Ball Valve

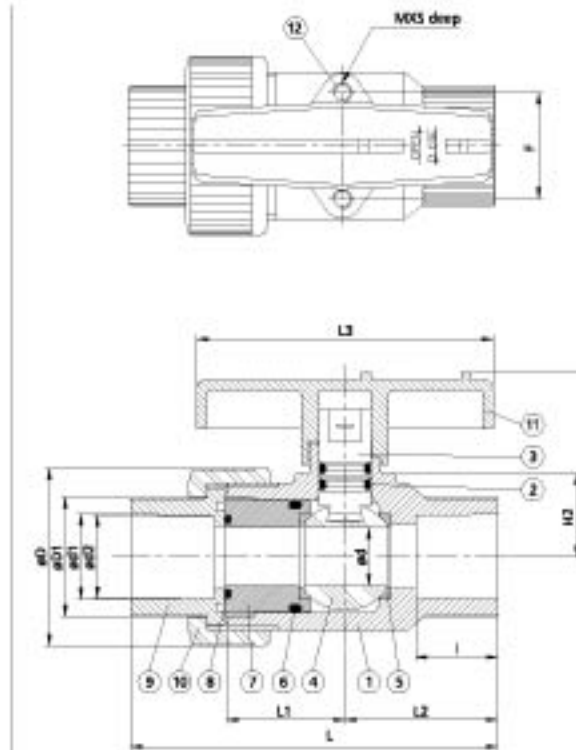
- Pressure rating: 150 PSI
 - Less flow loss and seal hermetically.
 - Fit compactly in spaces
 - Actuator could be installed with inserted nut
 - The standard product is without nut inserted
-
- 工作压力：150 PSI
 - 流量损失小，密闭性佳
 - 体积小，占用空间小
 - 可埋入钢柱加装自动控制器
 - 标准品不埋入钢柱

Type 型号	Size 尺寸	Standard 规格	Material 材质	Seat 垫座	O-ring O片	End type 接口
VP-620	1/2"~2"	ANSI, JIS, DIN	PVC	PTFE	EPDM, FPM	Socket, Threaded



SIZE Nom.	15mm (1/2")	20mm (3/4")	25mm (1")	32mm (1-1/4")	40mm (1-1/2")	50mm (2")
JIS	d1	22.30	26.30	32.33	38.43	48.46
	d2	21.70	25.70	31.67	37.57	47.54
	I	22.22	25.4	28.6	31.8	34.9
ANSI	d1	21.54	26.87	33.65	42.42	48.56
	d2	21.23	26.57	33.27	42.04	48.11
	I	22.22	25.40	28.58	31.75	34.93
DIN	d1	20.3	25.3	32.3	40.3	50.3
	d2	20.1	25.1	32.1	40.1	50.1
	I	16	19	22	26	31
thd./in	PT	14	14	11	11	11
	NPT	14	14	11.5	11.5	11.5
D	45	55	66	81	96	119
D1	31	37	44	54	65	78
d	13	18	23	30	38	48
L	96	112	122	140	150	183
L1	30	37	39	44	46	56
L2	41	47	51	57	65	83
L3	78	92	100	110	121	147
H1	48	58	65	76	88	108
H2	20.5	26	33	38	40	51
F	30	33	40	47	52	70
M	M5	M6	M6	M8	M8	M8
S	7	8	11	11	11	15

NO.	PART	MATERIAL	QTY
1	BODY	UPVC	1
2	STEM O-RING	EPDM,FPM	2
3	STEM	UPVC	1
4	BALL	UPVC	1
5	SEAT SEAL	PTFE	2
6	CARRIER O-RING	EPDM,FPM	1
7	SEAL CARRIER	UPVC	1
8	UNION O-RING	EPDM,FPM	1
9	END CONNECTOR	UPVC	1
10	UNION NUT	UPVC	1
11	HANDLE	ABS	1
12	INSERTED NUT	C3604	2



VP-620 Series

VP-640 双边由令球阀

Double Union Ball Valve

- Pressure rating:
150 PSI @73.4°F(23°C)
 - Full port design
 - Adjustable seat tightness
 - Easy to disassemble by handle
 - Less on-line down time for replacement / maintenance
 - Actuator could be installed with inserted nut
 - Standard Product is without nut
- 工作压力：150 PSI @73.4°F(23°C)
 - 标准流量设计
 - 双由令设计可同时当由令及阀门使用
 - 软座松紧可做适当调整
 - 不须使用特殊工具即可快速装配
 - 可埋入钢柱加装自动控制器
 - 标准品未埋入钢柱

Type 品号	Size 尺寸	Standard 规格	Material 材质	Seat 垫座	O-ring "O"片	End type 接口
VP-640	1/2"~4"	ANSI, JIS, DIN, BS	PVC	PTFE	EPDM, FPM	Socket, Threaded, Flanged
VP-641	1/2"~4"	ANSI, JIS, DIN, BS	CPVC	PTFE	EPDM, FPM	Socket, Threaded, Flanged
VP-643	1/2"~4"	ANSI, JIS, DIN, BS	PVDF	PTFE	EPDM, FPM	Socket, Threaded, Flanged
VP-644	1/2"~4"	ANSI, JIS, DIN, BS	PP	PTFE	EPDM, FPM	Socket, Threaded, Flanged
VP-645	1/2"~4"	ANSI, JIS, DIN, BS	ABS	PTFE	EPDM, FPM	Socket, Threaded, Flanged

● There is no flanged end for BS



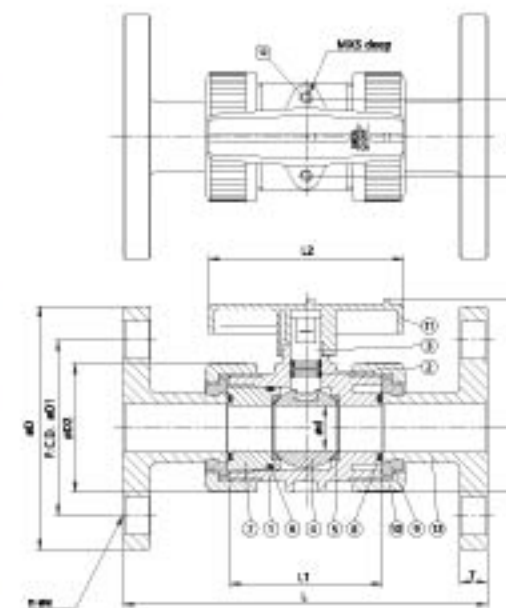
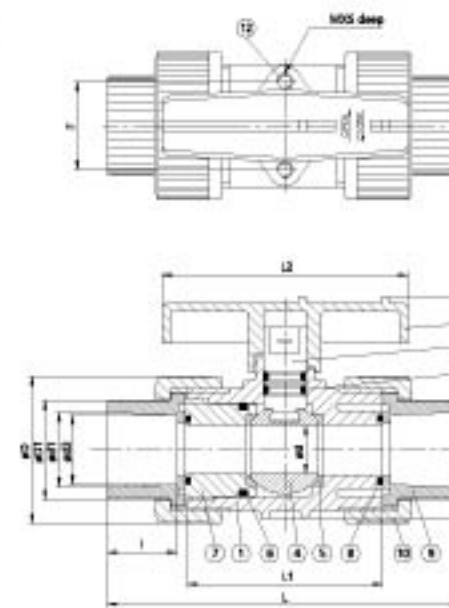
47

Size	15mm (1/2")	20mm (3/4")	25mm (1")	32mm (1-1/4")	40mm (1-1/2")	50mm (2")	65mm (2-1/2")	80mm (3")	100mm (4")
JIS	41	22.30	26.30	32.30	38.43	48.46	60.56	76.60	89.6
	42	21.70	25.70	31.67	37.57	47.54	59.44	75.67	88.83
ANSI	41	22.22	25.4	28.6	31.8	34.9	38.1	41.3	44.5
	42	21.34	26.87	33.95	42.42	48.56	60.63	75.36	89.31
DIN	41	21.23	26.57	33.27	42.04	48.11	60.17	72.85	86.7
	42	22.22	25.40	28.58	31.75	34.93	38.10	41.28	44.45
BS	41	20.3	25.3	32.3	40.3	50.3	63.3	75.3	90.3
	42	20.1	25.1	32.1	40.1	50.1	63.1	75.1	90.1
NPT	41	16	19	23	29	37	46	57	69
	42	16.5	19.5	22.5	27	30	36	44.45	47.62
D	45	55	66	82	96	120	140	163	225
	D1	31	37	44	54	65	79	92	108
L	112	132	144	167	172	205	273	303	333
	L1	60	73	78	87	92	112	136	158
H1	46	57	68	79	86	108	136	160	224
	H2	26.5	26	33	38	42	53	63	78
F	30	33	40	47	52	70	-	-	-
	M	M5	M6	M8	M8	M8	-	-	-
S	7	8	11	11	11	15	-	-	-

NO.	PART	MATERIAL	QTY
1	BODY	UPVC/CPVC/PP/PVDF/ABS	1
2	STEM O-RING	EPDM/FPM	2
3	STEM	UPVC/CPVC/PP/PVDF/ABS	1
4	BALL	UPVC/CPVC/PP/PVDF/ABS	1
5	SEAT SEAL	PTFE	2
6	CARRIER O-RING	EPDM/FPM	1
7	SEAL CARRIER	UPVC/CPVC/PP/PVDF/ABS	1
8	UNION O-RING	EPDM/FPM	2
9	END CONNECTOR	UPVC/CPVC/PP/PVDF/ABS	2
10	UNION NUT	UPVC/CPVC/PP/PVDF/ABS	2
11	HANDLE	ABS/PP	1
12	INSERTED NUT	CB304	2,4

Size	15mm (1/2")	20mm (3/4")	25mm (1")	32mm (1-1/4")	40mm (1-1/2")	50mm (2")	65mm (2-1/2")	80mm (3")	100mm (4")
JIS	D	95	100	125	135	140	155	175	185
	D1	70	75	80	100	105	120	140	150
ANSI	L	143	172	187	196	212	234	259	304
	4-15	4-15	4-15	4-15	4-15	4-15	4-15	4-15	4-15
DIN	D	95	100	117	127	132	152	176	191
	D1	67	70	78	89	99	121	140	152
BS	L	143	172	187	196	212	234	259	304
	4-15	4-15	4-15	4-15	4-15	4-15	4-15	4-15	4-15
D	95	105	115	140	150	165	185	200	230
	D1	65	75	85	100	110	125	145	163
L	130	150	160	180	200	230	290	310	350
	4-14	4-14	4-14	4-14	4-14	4-14	4-14	4-14	4-14
D2	45	55	65	82	90	120	140	160	225
	d	13	18	23	30	36	46	61	69
L1	60	73	78	87	92	112	135	158	178
	L2	76	92	100	110	121	147	180	224
H1	46	57	68	79	86	108	136	160	224
	H2	26.5	26	33	38	42	53	63	78
F	18	14	14	16	16	16	18	18	18
	M	M5	M5	M5	M5	M5	M5	M5	M5
S	7	8	11	11	11	15	-	-	-

NO.	PART	MATERIAL	QTY
1	BODY	UPVC/CPVC/PP/PVDF/ABS	1
2	STEM O-RING	EPDM/FPM	2
3	STEM	UPVC/CPVC/PP/PVDF/ABS	1
4	BALL	UPVC/CPVC/PP/PVDF/ABS	1
5	SEAT SEAL	PTFE	2
6	CARRIER O-RING	EPDM/FPM	1
7	SEAL CARRIER	UPVC/CPVC/PP/PVDF/ABS	1
8	UNION O-RING	EPDM/FPM	2
9	SET RING	UPVC/CPVC/PP/PVDF/ABS	2
10	UNION NUT	UPVC/CPVC/PP/PVDF/ABS	2
11	HANDLE	ABS/PP	1
12	INSERTED NUT	CB304	2,4
13	FLANGE	UPVC/CPVC/PP/PVDF/ABS	2



48

VP -680 .690 Pneumatic / Electric Actuator Double Union Ball Valve

气动式/电动式双由令球阀

- Pressure rating: 150 PSI @73.4°F(23°C)
- Pneumatic actuator specification meets with ISO 5211, DIN 3337, VDI / VDE 3845, NAMUR, easy to assemble solenoid valve, limit switches and accessories.
- Pneumatic actuator max. Air Supply pressure 8 Kg/cm², min. air pressure 5 Kg/cm²
- Electric actuator operation voltage 1-phase 110 / 220 V 3-phase 220 / 380 / 460 V
- Electric actuator could manually operate w/o clutch and break
- 工作压力：150 PSI @73.4°F(23°C)
- 气动驱动器建议最大进气空压 8Kg/cm²，最小 5Kg/cm²
- 气动驱动器规格符合：ISO 5211, DIN 3337, VDI / VDE 3845, NAMUR, 可加装电磁阀，微动开关及其他附属配件。
- 操作电压：AC 单相 110 / 220V 三相 220 / 380 / 460V
- 电动换手动操作时，不须离合器及煞车即可操作

Type 品号	Size 尺寸	Standard 规格	Material 材质	Seat 垫圈	O-ring O环	End type 接口
VP-680 690	1/2"~4"	ANSI, JIS, DIN, BS	PVC	PTFE	EPDM, FPM	Socket, Threaded, Flanged
VP-681 691	1/2"~4"	ANSI, JIS, DIN, BS	CPVC	PTFE	EPDM, FPM	Socket, Threaded, Flanged
VP-683 693	1/2"~4"	ANSI, JIS, DIN, BS	PVDF	PTFE	EPDM, FPM	Socket, Threaded, Flanged
VP-684 694	1/2"~4"	ANSI, JIS, DIN, BS	PP	PTFE	EPDM, FPM	Socket, Threaded, Flanged
VP-685 695	1/2"~4"	ANSI, JIS, DIN, BS	ABS	PTFE	EPDM, FPM	Socket, Threaded, Flanged

● There is no flanged end for BS



Size	15mm (1/2")	20mm (3/4")	25mm (1")	32mm (1-1/4")	40mm (1-1/2")	50mm (2")	65mm (2-1/2")	80mm (3")	100mm (4")
JIS	#1	22.30	24.30	22.33	28.43	48.46	60.56	76.60	89.6
	#2	21.70	23.70	21.87	27.57	47.54	59.44	75.87	88.83
ANSI	#1	22.22	23.4	28.6	31.8	34.9	38.1	44.45	63
	#2	21.34	26.87	33.65	42.42	48.56	60.63	73.38	89.31
DIN	#1	22.22	25.40	28.58	31.75	34.93	38.10	44.45	47.63
	#2	20.3	23.3	22.3	40.3	50.3	63.3	75.3	90.3
BS	#1	20.1	23.1	32.1	40.1	50.1	63.1	75.1	90.1
	#2	19	22	38	31	39	44	51	61
Inch	NPT	14	14	11.5	11.5	11.5	8	8	8
	PT	14	14	11	11	11	11	11	11
D	45	50	66	82	98	120	140	163	220
D1	31	37	44	54	65	79	92	108	146
#	13	18	23	30	38	48	61	69	99
L	112	132	144	165	171	200	273	323	326
L1	80	73	78	87	92	112	134	158	176

SIZE	MAX. AIR SUPPLY PRESSURE (kg/cm ²)	PNEUMATIC ACTUATOR MIN AIR PRESSURE 5 kg/cm ²	
		DOUBLE ACTING	SPRING RETURN
1/2"	8	AT80 DA	AT85 SR
3/4"	8	AT80 DA	AT85 SR
1"	8	AT85 DA	AT85 SR
1-1/4"	8	AT85 DA	AT85 SR
1-1/2"	8	AT85 DA	AT85 SR
2"	8	AT85 DA	AT85 SR
2-1/2"	8	AT85 DA	AT85 SR
3"	8	AT85 DA	AT85 SR
4"	8	AT85 DA	AT85 SR

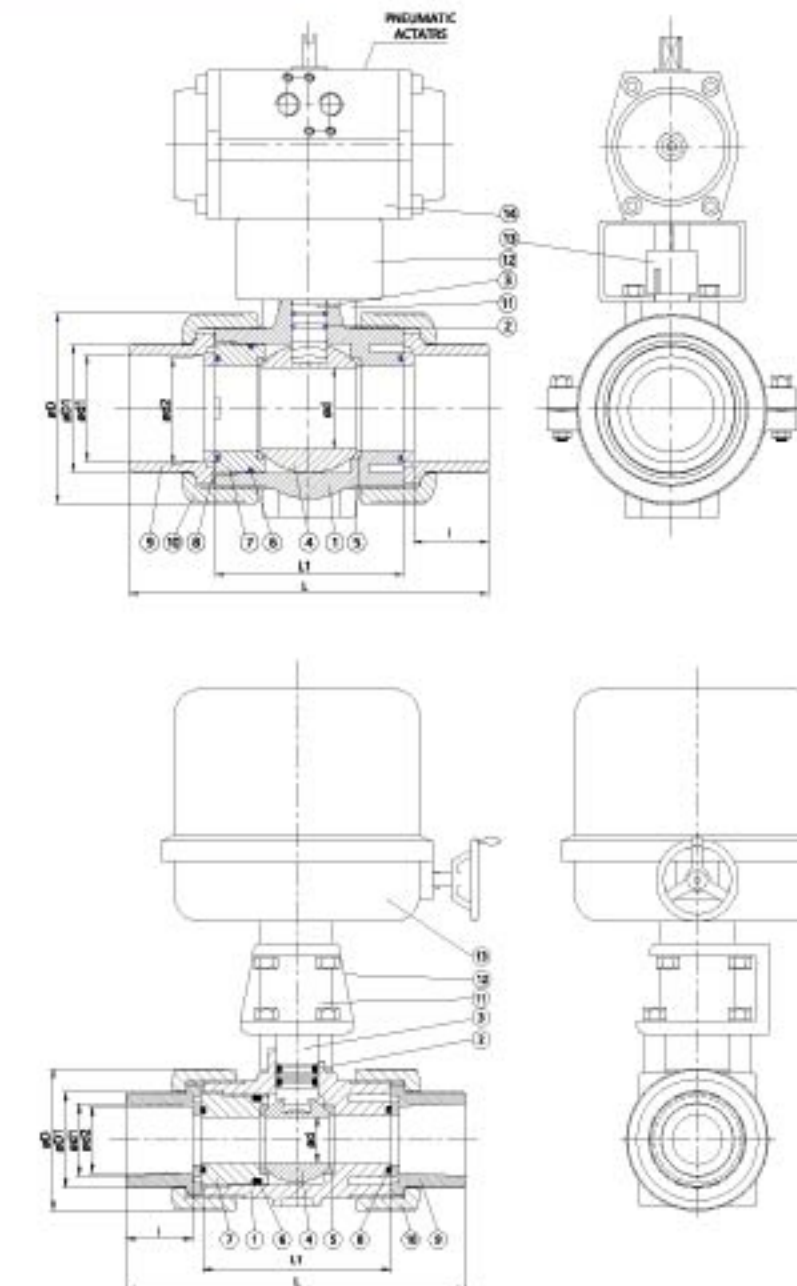
NO.	PART	MATERIAL	QTY
1	BODY	UPVC, CPVC, PP, PVDF, ABS	1
2	STEM O-RING	EPDM, FPM	2
3	STEM	UPVC, CPVC, PP, PVDF, ABS	1
4	BALL	UPVC, CPVC, PP, PVDF, ABS	1
5	SEAT SEAL	PTFE	2
6	CARRIER O-RING	EPDM, FPM	1
7	SEAL CARRIER	UPVC, CPVC, PP, PVDF, ABS	1
8	UNION O-RING	EPDM, FPM	2
9	END CONNECTOR	UPVC, CPVC, PP, PVDF, ABS	2
10	UNION NUT	UPVC, CPVC, PP, PVDF, ABS	2
11	COUPLING	SUS	1
12	MOUNTING PAD	SUS	1
13	ELECTRIC ACTUATOR	ALUMINUM ALLOY ENCLOSURE	1

SIZE	ELECTRIC ACTUATOR	
	WITH HANDWHEEL	WITHOUT HANDWHEEL
1/2"	DM2	DM1
3/4"	DM2	DM1
1"	DM2	DM1
1-1/4"	DM2	DM1
1-1/2"	DM2	DM1
2"	DM2	DM4
2-1/2"	DM3	DM2
3"	DM3	DM2
4"	DM4	-

ELECTRIC ACTUATOR	Single phase		Three phase	
	110V	220V	380V	440V
DM1	V	V	V	V
DM2	V	V	X	X
DM3	V	V	V	V
DM4	V	V	V	V

备注：
1. 上述气动及电动驱动器(Actuator)选配型号及图例仅供参考，可随客户需求选用。
2. 相关资料资料欢迎进一步向本公司洽询。

NO.	PART	MATERIAL	QTY
1	BODY	UPVC, CPVC, PP, PVDF, ABS	1
2	STEM O-RING	EPDM, FPM	2
3	STEM	UPVC, CPVC, PP, PVDF, ABS	1
4	BALL	UPVC, CPVC, PP, PVDF, ABS	1
5	SEAT SEAL	PTFE	2
6	CARRIER O-RING	EPDM, FPM	1
7	SEAL CARRIER	UPVC, CPVC, PP, PVDF, ABS	1
8	UNION O-RING	EPDM, FPM	2
9	END CONNECTOR	UPVC, CPVC, PP, PVDF, ABS	2
10	UNION NUT	UPVC, CPVC, PP, PVDF, ABS	2
11	SUPPORT	UPVC	2
12	MOUNTING PAD	SUS	1
13	COUPLING	SUS	1
14	PNEUMATIC ACTUATOR	EXTRUDED ALUMINUM ALLOY	1



Excellent & Advanced

VP-700 Series

Diaphragm Valves 隔膜阀

- VP-710
Diaphragm Valve (Flanged)
法兰式隔膜阀
- VP-720, 730
Diaphragm Valve
(Spigot, Union - Socket / Threaded)
插管式 / 由令式隔膜阀



VP-710 法兰式隔膜阀 Diaphragm Valve (Flanged)

- Pressure rating: 1/2"~3" 150 PSI, 4"~6" 72 PSI, 8" 43 PSI
(Working pressure is varified by rawmaterial of diaphragm and temperature.)
- Smooth operation with clear indication of opening / closing through the gauge cover
- Low maintenance cost with replaceable diaphragm and long service life
- Adjustable stopper can avoid over tightness.
- 工作压力：1/2"~3" 150 PSI, 4"~6" 72 PSI, 8" 43PSI
(因DIAPHRAGM 之材质、工作温度不同而压力会不同)
- 关闭程度可清楚于透明罩上显示
- 膜片可替换，保养管理容易
- 可调整的阻档螺帽设计，可以防止关闭时手轮之压力过当
- 法兰片底部有平面设计，便于安装及放置
- 中心柱及套筒可选用SUS 304 / 316L 材质

Type 型号	Size 尺寸	Standard 规格	Material 材质	Gasket 垫片	O-ring O环	Diaphragm 隔膜片	End type 接口	Bolt 螺栓
VP-710	1/2"~8"	ANSI, JIS, DIN	PVC	PTFE	NBR	EPDM, FPM, PTFE	Flanged	SUS 304 / 316
VP-711	1/2"~8"	ANSI, JIS, DIN	CPVC	PTFE	NBR	EPDM, FPM, PTFE	Flanged	SUS 304 / 316
VP-713	1/2"~8"	ANSI, JIS, DIN	PVDF	PTFE	NBR	EPDM, FPM, PTFE	Flanged	SUS 304 / 316
VP-714	1/2"~8"	ANSI, JIS, DIN	PP	PTFE	NBR	EPDM, FPM, PTFE	Flanged	SUS 304 / 316

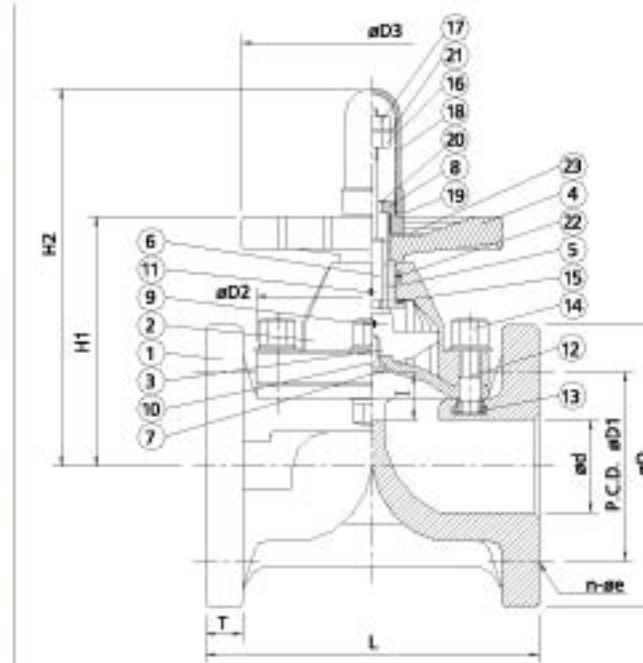


Caution! The valve is completely closed when handwheel can't turn more with normal torque, but it will cause the unrecoverable division of diaphragm if the handwheel is continuously forced to turn in such above condition!

注意! 手轮正常旋紧至无法继续时即代表阀门已完全关闭，切勿再强迫旋转避免造成无法修复之膜片撕裂现象!

Nom.	SIZE	15m (1/2')	20mm (3/4')	25mm (1')	40mm (1-1/2')	50mm (2')	65mm (2-1/2')	80mm (3')	100mm (4')	150mm (6')	200mm (8')
JIS	D	95	100	125	140	155	175	185	210	291	343
	D1	70	75	90	105	120	140	150	175	240	290
	n-se	4-15	4-15	4-19	4-19	4-19	4-19	8-19	8-19	8-23	12-23
ANSI	L	110	120	130	180	210	250	280	340	480	570
	D	89	98	108	127	152	178	191	229	291	343
	D1	61	70	79	98	121	140	152	191	241	298
DIN	n-se	4-16	4-16	4-16	4-16	4-19	4-19	4-19	8-19	8-22	8-22
	L	108	150	150	176	202	250	264	329	480	570
	D	95	105	115	150	165	185	200	220	291	343
JIS	D1	65	75	85	110	125	145	160	180	240	295
	n-se	4-14	4-14	4-14	4-18	4-18	4-18	8-18	8-18	8-23	8-23
	L	130	150	160	200	230	290	310	350	480	570
ANSI	UPVC, CPVC	12	13	13	17	20	22	22	23	26	30
	PP, PVDF	13	14	14	18	21	23	24	25	25	35
DIN	UPVC, CPVC	12	15	18	15	19	20	20	23	26	30
	PP, PVDF	13	16	19	16	20	21	23	25	28	35
DIN	UPVC, CPVC	19	20	20	19	22	22	24	24	26	30
	PP, PVDF	20	21	21	20	23	23	26	26	28	35
D2	54x70	63x78	63x88	125	148	182	203	255	385	430	
D3	95	95	110	150	150	210	210	250	410	405	
d	13	18	25	41	52	67	78	100	148	198	
H1	85	94	98	130	148	189	250	275	334	450	
H2	110	137	160	200	225	268	343	383	476	627	
l	10	12	15	22	31	39	48	60	70	95	

NO.	PART	MATERIAL	QTY
1	BODY	UPVC, PP, PVDF, CPVC	1
2	BONNET	UPVC, PP, PP+GF, CPVC, PVDF	1
3	COMPRESSOR	FC, SUS, PPG, PVDF	1
4	HANDWHEEL	PP	1
5	SLEEVE	C3602, SUS	1
6	STEM	C3602, SUS	1
7	DIAPHRAGM	EPDM, FPM, PTFE	1
8	CAP	UPVC, PP, PVDF, CPVC	1
9	COMPRESSOR PIN	SUS 304	1
10	INSERTED METAL	C3604, SUS 304	1
11	GREASE NIPPLE	C3604, (65-200)	1
12	BOLT & WASHER	200mm-----16 SET 150mm-----12 SET 65-125mm-----8 SET 25-50mm-----6 SET	SUS 304/316
13	INSERTED NUT		
14	NUT & WASHER		
15	THRUST BEARING	STANDARD (100-200)	1
16	STOPPER	SUS 304	1
17	SET NUT	SUS 304	1
18	GAUGE COVER	AS	1
19	SHEET GASKET	EPDM	1
20	SHEET RING	SUS 304	1
21	SPRING WASHER	SUP	1
22	O-RING	NBR	1
23	LOGO PLATE	UPVC	1



VP-720 Diaphragm Valve 插管式/由令式隔膜阀 (Spigot, Union – Socket / Threaded)

- Pressure rating: 100 PSI
- Smooth operation with clear indication of opening / closing through the gauge cover.
- Low maintenance cost with replaceable diaphragm and long service life
- Adjustable stopper can avoid over tightening
- 工作压力：100 PSI
- 关闭程度可清楚于透明罩上显示
- 膜片可替换，保养管理容易
- 可调整的阻挡螺帽设计，可以防止关闭时手轮之压力过当
- 底座埋有铜柱，易于固定
- 中心柱及套筒可选用 SUS 304 / 316L 材质

Type 型号	Size 尺寸	Standard 规格	Material 材质	Gasket 垫圈	O-ring O环	Diaphragm 隔膜片	End type 接口	Bolt 螺栓
VP-720	1/2"–2"	DIN	PVC	EPDM	NBR	EPDM, FPM, PTFE	Spigot	SUS 304 / 316
VP-721	1/2"–2"	DIN	CPVC	EPDM	NBR	EPDM, FPM, PTFE	Spigot	SUS 304 / 316
VP-723	1/2"–2"	DIN	PVDF	EPDM	NBR	EPDM, FPM, PTFE	Spigot	SUS 304 / 316
VP-724	1/2"–2"	DIN	PP	EPDM	NBR	EPDM, FPM, PTFE	Spigot	SUS 304 / 316
VP-730	1/2"–2"	ANSI, JIS, DIN	PVC	EPDM	NBR / EPDM, FPM	EPDM, FPM, PTFE	Socket, Threaded	SUS 304 / 316
VP-731	1/2"–2"	ANSI, JIS, DIN	CPVC	EPDM	NBR / EPDM, FPM	EPDM, FPM, PTFE	Socket, Threaded	SUS 304 / 316
VP-733	1/2"–2"	ANSI, JIS, DIN	PVDF	EPDM	NBR / EPDM, FPM	EPDM, FPM, PTFE	Socket, Threaded	SUS 304 / 316
VP-734	1/2"–2"	ANSI, JIS, DIN	PP	EPDM	NBR / EPDM, FPM	EPDM, FPM, PTFE	Socket, Threaded	SUS 304 / 316

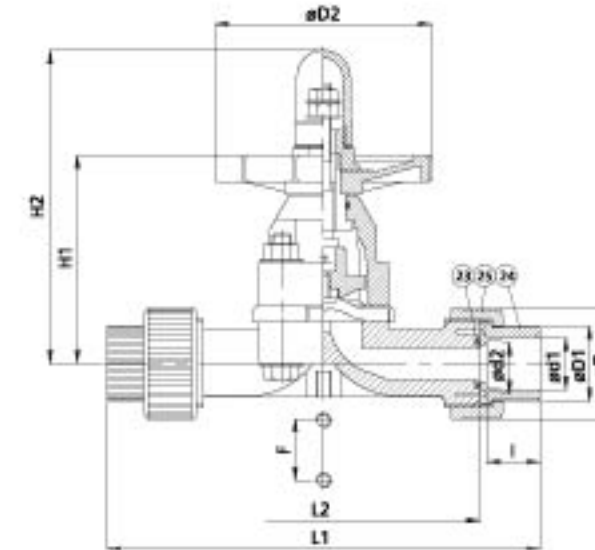
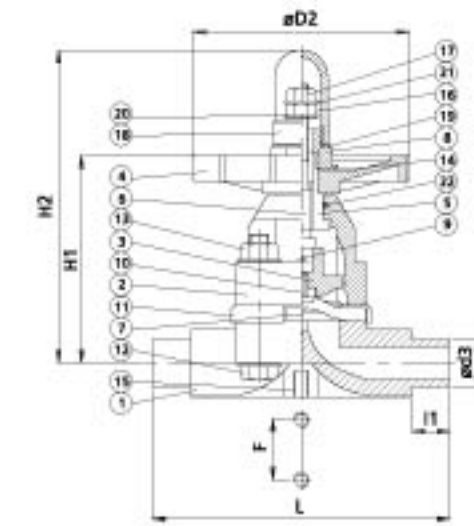


Caution! The valve is completely closed when handwheel can't turn more with normal torque, but it will cause the unrecoverable division of diaphragm if the handwheel is continuously forced to turn in such above condition!

注意! 手轮正常旋紧至无法继续时即代表阀门已完全关闭，切勿再强迫旋转避免造成无法修复之膜片撕裂现象!

SIZE	15mm (1/2")	20mm (3/4")	25mm (1")	40mm (1-1/2")	50mm (2")
JIS					
d1	22.30	26.30	32.33	48.46	60.56
d2	21.70	25.70	31.67	47.54	59.44
I	22.2	25.4	28.6	34.9	38.1
ANSI					
d1	21.54	26.87	33.65	48.56	60.63
d2	21.23	26.57	33.27	48.11	60.17
I	22.22	25.4	28.58	34.93	38.1
DIN					
d1	20.3	25.3	32.3	50.3	63.3
d2	20.1	25.1	32.1	50.1	63.1
I	16	19	22	31	38
BS					
d1	21.5	26.9	33.7	48.4	60.5
d2	21.3	26.7	33.5	48.2	60.3
I	16.5	19.5	22.5	30	36
thd./in					
NPT	14	14	11.5	11.5	11.5
BSPT	14	14	11	11	11
D	46	55	66	97	120
D1	31	37	44	64	78
D2	95	95	110	150	150
d3	20	25	32	50	63
L2	130	150	160	200	230
L1	180	207	224	276	317
L	124	144	154	194	224
H2	128	138	144	220	225
H1	86	95	98	150	148
I1					
PVC	16	19	22	31	34
PP,PVDF	14.5	16	18	23.5	27.5
S	11	11	11	15	15
F	25	25	25	45	45
M	M6	M6	M6	M8	M8

NO.	PART	MATERIAL	QTY
1	BOOY	UPVC, PP, PVDF, CPVC	1
2	BONNET	UPVC, PP, PP+GF, CPVC, PVDF	1
3	COMPRESSOR	FC, SUS	1
4	HANDWHEEL	PP	1
5	SLEEVE	C3602	1
6	STEM	C3602	1
7	DIAPHRAGM	EPDM, FPM, PTFE	1
8	CAP	UPVC, PP+GF, CPVC, PVDF	1
9	COMPRESSOR PIN	SUS 304	1
10	INSERTED METAL	C3602, SUS304	1
11	RUBBER LINER	SUS 304	1
12	BOLTS & WASHERS	SUS 304	4
13	NUTS & WASHERS	SUS 304	4
14	NAME PLATE	PVC	1
15	BOTTOM NUT	C 3604	2
16	STOPPER	SUS 304	1
17	SET NUT	SUS 304	1
18	GAUGE COVER	AS	1
19	SHEET GASKET	EPDM	1
20	SHEET RING	SUS 304	1
21	INDICATIVE WASHER	ABS	1
22	O-RING	NBR	1
23	O-RING	EPDM, FPM	2
24	END CONNECTOR	UPVC, PVDF, PP, CPVC	2
25	UNION NUT	UPVC, PVDF, PP, CPVC	2



Excellent & Advanced

VP-800 Series

Butterfly Valves 蝶阀

- VP-800
Economy Butterfly Valve
经济型蝶阀
- VP-810
Butterfly Valve (Handle type)
把手式蝶阀
- VP-820
Butterfly Valve (Gear Box)
齿轮式蝶阀
- VP-830
Pneumatic Actuator Butterfly Valve
气动式蝶阀
- VP-840
Electric Actuator Butterfly Valve
电动式蝶阀



VP-810 把手式蝶阀 Butterfly Valve (Handle type)

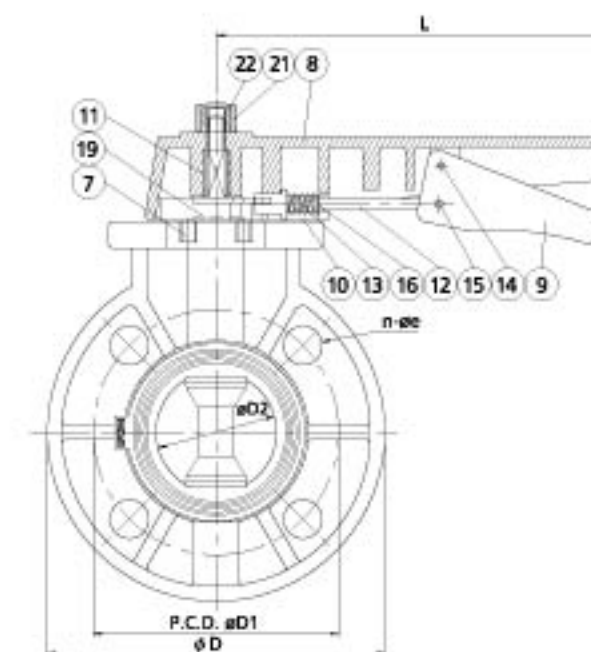
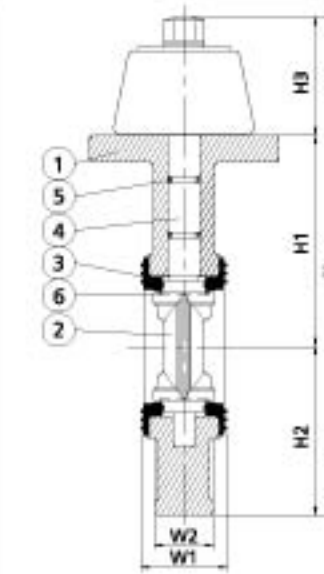
- Pressure rating:
2"~8" 150 PSI @73.4°F(23°C)
- Compact and light-weight design
- Low flow loss
- The scale on top of the body can clearly indicate the opening level.
- Ideally suited in a limited piping space
- 工作压力：150 PSI @73.4°F(23°C)
- 蝶片开启角度可由刻度清楚显示，并可由齿轮片固定
- 全面型垫片密闭设计，安全性佳

Type 品号	Size 尺寸	Standard 规格	Material 材质	Seat 垫座	O-ring O环	Disc 蝶片	End type 接口
VP-810	2"~8"	ANSI, JIS, DIN	PVC	EPDM, FPM	EPDM, FPM	PP	Flanged
VP-811	2"~8"	ANSI, JIS, DIN	CPVC	EPDM, FPM	EPDM, FPM	CPVC	Flanged
VP-813	2"~8"	ANSI, JIS, DIN	PVDF	EPDM, FPM	EPDM, FPM	PVDF	Flanged
VP-814	2"~8"	ANSI, JIS, DIN	PP	EPDM, FPM	EPDM, FPM	PP	Flanged



SIZE	50mm (2")	65mm (2-1/2")	80mm (3")	100mm (4")	125mm (5")	150mm (6")	200mm (8")
JIS	D1	120	140	150	175	210	290
	n-øe	4-19	4-19	8-19	8-19	8-23	12-23
ANSI	D1	121	140	152	191	216	298
	n-øe	4-19	4-19	4-19	8-19	8-22	8-22
DIN	D1	125	145	160	180	210	295
	n-øe	4-18	4-18	8-18	8-18	8-18	8-22
D	165	185	200	229	257	285	343
D2	56.5	69.5	79.5	102.5	130	153	203
D3	105	120	123	135	164	169	201
L	199	199	199	252	297	297	297
H	248.5	267.5	277	316	373.5	404.5	464.5
H1	103	113	115	135.5	165	177	210
H2	82.5	92.5	100	114.5	128.5	142.5	171.5
H3	63	62	62	66	80	83	83
W1	43	46	46	56	69	70.5	85
W2	35	36	36	47	57	62	76
W3	94	94	94	100	110	100	122

NO.	PART	MATERIAL	QTY
1	BODY	UPVC, CPVC, PP, PVDF	1
2	DISC	UPVC, CPVC, PP, PVDF	1
3	SEAT SEAL	EPDM, FPM	1
4	STEM	SUS 410	1
5	STEM O-RING	EPDM, FPM	2
6	DISC O-RING	EPDM, FPM	2
7	INSERT NUT 2"-6"	C3604	3
8	LARGE HANDLE	PP	1
9	SMALL HANDLE	PP	1
10	SPRING LOCK	PP	1
11	HANDLE INSERT	STAINLESS STEEL	1
12	HANDLE LEVER	SUS 304	1
13	SPRING	SUS 304	1
14	SPRING PIN	SUS 304	1
15	SPRING PIN	SUS 304	1
16	WASHER	SUS 304	1
17	LOCKING PLATE	SUS 304	1
18	GEAR SEAT	PP+GF, UPVC, PVDF	1
19	STEM WASHER 2"-5"	SUS 304	1
20	BOLT	SUS 304	3
21	NUT	UPVC, PVDF	1
22	INSERT NUT	C3604	1
23	LEVEL	SUS 304	1
24	RIVET	STAINLESS STEEL	2



VP-820 齿轮式蝶阀 Butterfly Valve (Gear Box)

- Pressure rating : 2"~10" 150 PSI,
12" 100 PSI,
14,16" 86 PSI,
18" 72 PSI,
20"~24" 51 PSI

(Standard stem:

SUS 410+heat process
The stem of SUS 304, or SUS 316,
or SUS 316L the working pressure
is lower.)

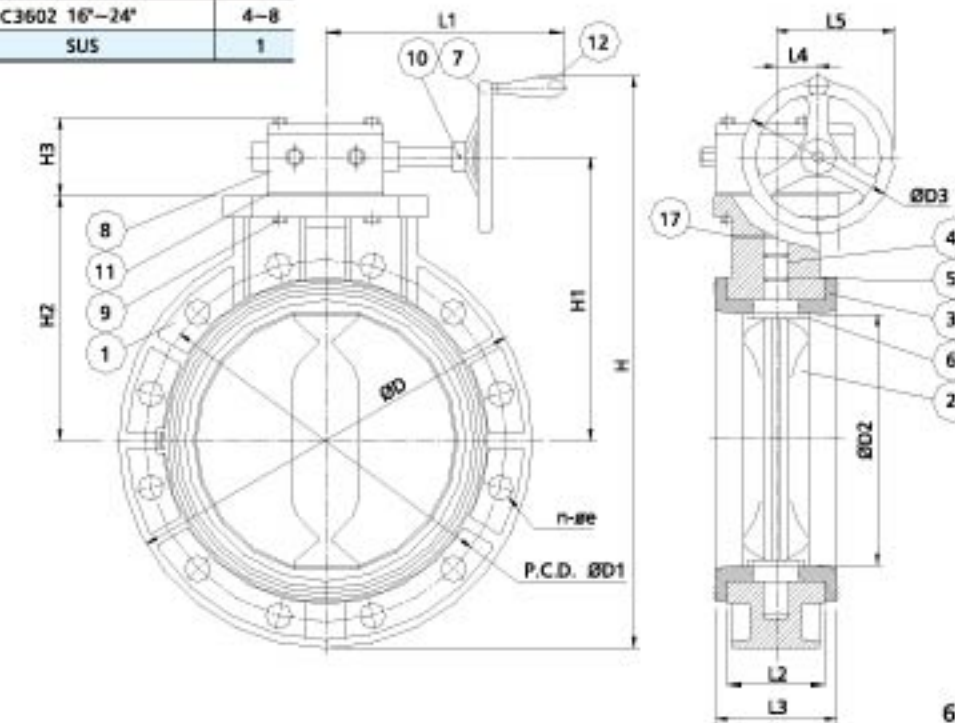
- Lower torque and seal
hermetically
- Low flow loss
- The opening angle of the disc
could be seen clearly through the
arrow on top of the gear box.
- Ideally suited in a limited piping
space
- Easy to mount actuator with flat
zone design at the top of valve
- 工作压力 : 2"~10" 150 PSI,
12" 100PSI,
14", 16" 86PSI,
18" 72PSI,
20"~24" 51PSI
(标准中心柱材质 SUS 410+ 热处理,
若中心柱材质为 SUS304,
SUS316, SUS316L 压力较低)
底扭力, 密闭效果佳
- 蝶片开启角度可由箭头指标
清楚显示

Type 品号	Size 尺寸	Standard 规格	Material 材质	Seat 垫座	O-ring O环	Disc 蝶片	End type 接口
VP-820	2"~24"	ANSI, JIS, DIN	PVC	EPDM, FPM	EPDM, FPM	PP	Flanged
VP-821	2"~24"	ANSI, JIS, DIN	CPVC	EPDM, FPM	EPDM, FPM	CPVC	Flanged
VP-823	2"~24"	ANSI, JIS, DIN	PVDF	EPDM, FPM	EPDM, FPM	PVDF	Flanged
VP-824	2"~24"	ANSI, JIS, DIN	PP	EPDM, FPM	EPDM, FPM	PP	Flanged



SIZE	50mm (2")	65mm (2-1/2")	80mm (3")	100mm (4")	125mm (5")	150mm (6")	200mm (8")	250mm (10")	300mm (12")	350mm (14")	400mm (16")	450mm (18")	500mm (20")	600mm (24")
IS	D1 n-ee	120 4-19	140 4-19	150 4-19	175 4-19	210 4-23	240 4-23	290 4-23	350 4-23	400 4-23	445 4-23	510 4-23	565 4-23	620 4-23
ANSI	D1 n-ee	121 4-19	140 4-19	152 4-19	191 4-19	216 4-22	241 4-22	298 4-22	362 4-22	432 4-22	476 4-22	540 4-22	578 4-22	635 4-22
DIN	D1 n-ee	125 4-18	145 4-18	160 4-18	180 4-18	210 4-22	240 4-22	295 4-22	350 4-22	400 4-22	460 4-22	515 4-22	565 4-22	620 4-22
D		165	185	200	229	257	285	343	411	490	530	600	630	696
D2		56.5	69.5	79.5	102.5	130	153	203	255	309.5	360	397.5	452.5	502
D3		159	159	159	159	159	202	202	202	250	300	300	300	406
H		287	307	309	351.5	398	463	525	591	706	732	869	910	1037
H1		125	135	137	147	198	221	254	286	344	347	425	445	486
H2		103	113	115	135.5	165	177	210	242	302	300	350	370	410
H3		53	53	53	53	75	77.5	77.5	77.5	78	78	120	117	143
L1		140	140	140	140	140	284.5	284.5	284.5	330	330	353	353	390
L2		34.5	37	37	47	57	62	76	95.5	116.5	113	152.5	163.5	170
L3		43	46	46	56	69	70.5	85	109	133	127	168	189.5	189
L4		41.5	41.5	41.5	41.5	41.5	60	60	60	60	60	81	81	120
L5		121	121	121	121	121	161	161	161	185	185	231	231	323

NO.	PART	MATERIAL	QTY
1	BODY	UPVC,CPVC,PVDF,PP	1
2	DISC	CPVC,PVDF,PP	1
3	SEAL	EPDM,FPM	1
4	STEM	SUS 410	1
5	O-RING	EPDM,FPM	2
6	O-RING	EPDM,FPM	2
7	HANDWHEEL	FC 20	1
8	GEAR BOX	CI POWDER PAINT	1
9	BOLT & WASHER	SUS 304	4
10	SPRING PIN	STEEL	1
11	PACKING	EPDM 6"~14"	1
12	SMALL HANDLE	STEEL	1
13	KEY	STEEL	1
14	SEAL	EPDM 14"~24"	2
15	METAL STAT	C3602 16"~24"	1
16	INSERT NUT	C3602 16"~24"	4~8
17	PIN	SUS	1



VP-830 气动式蝶阀

Pneumatic Actuator Butterfly Valve

- Pressure rating : 2"~10" 150 PSI, 12" 100 PSI, 14", 16" 86 PSI, 18" 72 PSI, 20"~24" 51 PSI

- Low flow loss

- The opening angle of the disc could be seen clearly through the position indicator.

- Fast / Efficient operation for automatic control system in a limited piping space

- Pneumatic actuator specification meets with ISO 5211, VDI / VDE 3845, DIN 3337, NAMUR, easy to assemble solenoid valve, limit switches and accessories.

- Pneumatic actuator max. Air Supply pressure 8 Kg/cm² min. air pressure 5 Kg/cm²

- 工作压力 : 2"~10" 150 PSI, 12" 100PSI, 14", 16" 86PSI, 18" 72PSI, 20"~24" 51PSI

- 蝶片开启角度可由位置显示器取

- 气动驱动器规格符合 ISO 5211, DIN 3337, VDI / VDE 3845, NAMUR, 可加装电磁阀、微动开关及其他附属配件。

- 气动驱动器建议最大进气空压 8Kg/cm², 最小 5Kg/cm²

Type 品号	Size 尺寸	Standard 规格	Material 材质	Seat 垫圈	O-ring O环	Disc 蝶片	End type 接口
VP-830	2"~24"	ANSI, JIS, DIN	PVC	EPDM, FPM	EPDM, FPM	PP	Flanged
VP-831	2"~24"	ANSI, JIS, DIN	CPVC	EPDM, FPM	EPDM, FPM	CPVC	Flanged
VP-833	2"~24"	ANSI, JIS, DIN	PVDF	EPDM, FPM	EPDM, FPM	PVDF	Flanged
VP-834	2"~24"	ANSI, JIS, DIN	PP	EPDM, FPM	EPDM, FPM	PP	Flanged

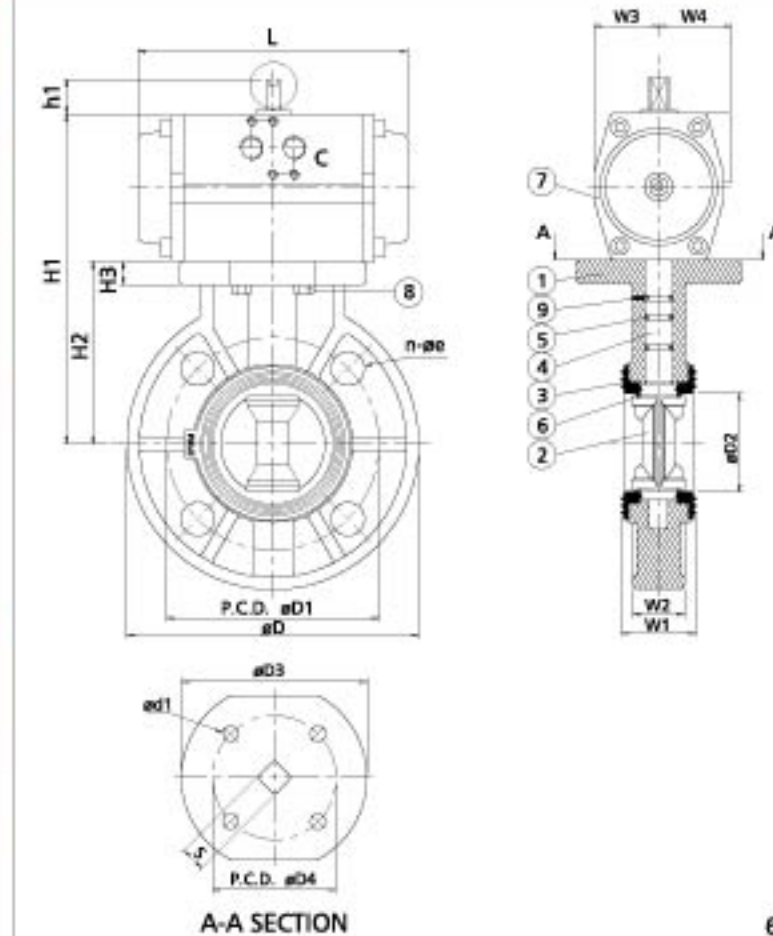


SIZE	50mm (2")	65mm (2-1/2")	80mm (3")	100mm (4")	125mm (5")	150mm (6")	200mm (8")	250mm (10")	300mm (12")	350mm (14")	400mm (16")	450mm (18")	500mm (20")	600mm (24")	
JIS	D1	120	140	150	175	210	240	290	355	400	445	510	565	620	
	n-ee	4-19	4-19	8-19	8-19	8-23	8-23	12-23	12-25	16-25	16-25	16-27	20-27	20-27	
ANSI	D1	120.39	139.44	152.40	190.50	216	241.55	298.5	362	437	476	540	578	635	
	n-ee	4-19	4-19	4-19	8-19	8-22	8-22	12-23	12-25	12-25	12-29	16-29	16-32	20-32	
DIN	D1	125	145	160	180	210	240	295	350	400	460	515	565	620	
	n-ee	4-18	4-18	8-18	8-18	8-18	8-23	8-23	12-23	12-23	16-23	16-27	20-27	20-30	
D	165	185	200	229	257	285	343	411	480	533	597	635	699	813	
D2	56.5	69.5	79.5	102.5	130	152	203	255	309.5	365	406	452	502	603	
D3	105	120	123	135	164	169	201	205	237	236	300	335	335	335	
H2	103	113	115	135.5	165	177	210	242	302	302	300	350	370	400	
H3	13	13	13	13	15	19	21	22	26	25	32	35	40	46	
W1	43	46	46	56	69	70.5	85	109	133	127	168	169.5	189	209	
W2	29	31	31	40	50	54	69	86	103.5	113	153	163	171	191	
T-DIN239 BSP	1/4"	1/4"	1/4"	1/4"	1/4"	1/4"	1/4"	1/4"	1/4"	1/4"	1/4"	1/4"	1/2"	1/2"	
DOUBLE ACTING	#D1	6.5	6.5	8.5	8.5	8.5	10.5	10.5	12.5	-	-	-	-	-	
	#D4	50	50	70	70	70	102	102	125	-	-	-	-	-	
	H1	20	20	20	20	20	30	30	30	-	-	-	-	-	
	H1	198	198	217	237.5	280	304	367	399	498	-	-	-	-	-
	L	158.5	158.5	210.5	210.5	247.5	268.5	345	345	437.5	-	-	-	-	-
	S	14	14	17	17	17	22	27	27	27	-	-	-	-	-
SPRING RETURN	#D1	6.5	6.5	8.5	8.5	8.5	10.5	10.5	12.5	-	-	-	-	-	
	#D4	50	50	70	70	70	102	102	125	-	-	-	-	-	
	H1	20	20	20	20	20	30	30	30	-	-	-	-	-	
	H1	205	215	230	250.5	292	334	406	438	-	-	-	-	-	-
	L	210.5	210.5	247.5	247.5	268.5	345	437.5	437.5	-	-	-	-	-	-
	S	17	17	17	17	22	27	27	27	-	-	-	-	-	-
W3	42	42	48	48	55	66.5	81	81	-	-	-	-	-	-	
W4	52	52	57	57	67	82	99	99	-	-	-	-	-	-	

SIZE	MAX. AIR SUPPLY PRESSURE (kg/cm ²)	PNEUMATIC ACTUATOR MIN AIR PRESSURE 5 kg/cm ²	
		DOUBLE ACTING	SPRING RETURN
2"	8	AT10 DA	AT20 SR
2-1/2"	8	AT10 DA	AT20 SR
3"	8	AT20 DA	AT25 SR
4"	8	AT20 DA	AT25 SR
5"	8	AT25 DA	AT30 SR
6"	8	AT30 DA	AT40 SR
8"	8	AT35 DA	AT45 SR
10"	8	AT45 DA	AT50 SR
12"	8	AT50 DA	AT55 SR
14"	8	AT55 DA	AT65 SR
16"	8	AT60 DA	AT65 SR
18"	8	AT65 DA	AT70 SR
20"	8	AT65 DA	AT70 SR
24"	8	AT65 DA	AT70 SR

备注:
1. 上述气动及电动驱动器(Pneumatic Actuator)搭配型号及图形仅供参考, 可依客户需求选用。
2. 相关规格资料欢迎进一步向本公司洽询。

NO.	PART	MATERIAL	QTY
1	BODY	UPVC, PP, CPVC, PVDF	1
2	DISC	CPVC, PP, PVDF	1
3	SEAT SEAL	EPDM, FPM	1
4	STEM	SUS 410	1
5	O-RING	EPDM, FPM	2
6	O-RING	EPDM, FPM	2
7	PNEUMATIC ACTUATORS	EXTRUDED ALUMINUM ALLOY	1
8	BOLT & WASHER	SUS	4
9	PIN	SUS	1



VP-840 电动式蝶阀

Electric Actuator Butterfly Valve

- Pressure rating: 2"~10" 150 PSI, 12" 100 PSI, 14", 16" 86 PSI
- Low flow loss
- The opening angle of the disc could be seen clearly through the position indicator.
- Fast / Efficient operation for automatic control system in a limited piping space
- Electric actuator operation voltage 1-phase 110 / 220 V, 3-phase 220 / 380 / 460 V
- Electric actuator could manually operate w/o clutch and break
- 工作压力：2"~10" 150 PSI, 12" 100PSI, 14", 16" 86PSI, 18" 72PSI, 20"~24" 51PSI
- 蝶片开启角度可经由位址显示器取得
- 操作电压：AC 单相 110 / 220V 三相 220 / 380 / 460V
- 电动换手动操作时，不须离合器及煞车即可操作

Type 型号	Size 尺寸	Standard 规格	Material 材质	Seat 垫座	O-ring O环	Disc 碟片	End type 接口
VP-840	2"~24"	ANSI, JIS, DIN	PVC	EPDM, FPM	EPDM, FPM	PP	Flanged
VP-841	2"~24"	ANSI, JIS, DIN	CPVC	EPDM, FPM	EPDM, FPM	CPVC	Flanged
VP-843	2"~24"	ANSI, JIS, DIN	PVDF	EPDM, FPM	EPDM, FPM	PVDF	Flanged
VP-844	2"~24"	ANSI, JIS, DIN	PP	EPDM, FPM	EPDM, FPM	PP	Flanged



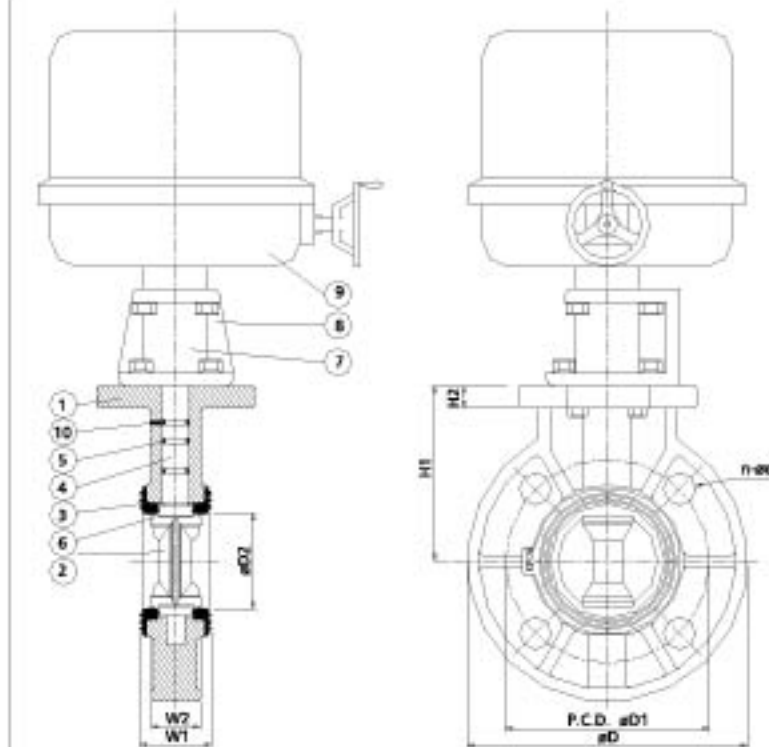
SIZE	50mm (2")	65mm (2-1/2")	80mm (3")	100mm (4")	125mm (5")	150mm (6")	200mm (8")	250mm (10")	300mm (12")	350mm (14")	400mm (16")	450mm (18")	500mm (20")	600mm (24")	
JIS	D1	120	140	150	175	210	240	290	355	400	445	510	565	620	730
	n-se	4-19	4-19	5-19	8-19	8-23	8-23	12-23	12-25	16-25	16-25	16-27	20-27	20-27	24-33
ANSI	D1	121	140	152	191	216	241	298	362	432	476	540	578	635	750
	n-se	4-19	4-19	4-19	8-19	8-22	8-22	12-25	12-25	12-29	16-29	16-32	20-32	20-35	
DIN	D1	125	145	160	180	210	240	295	360	400	460	515	565	620	725
	n-se	4-18	4-18	8-18	8-18	8-18	8-22	12-22	12-22	16-22	16-27	20-27	20-27	20-30	
D	165	185	201	229	257	285	343	411	490	533	597	635	699	813	
D2	56.5	70.0	79.0	103.0	130	151.0	200	255	311	365	406	452	502	603	
H1	103	113	115	135	165	177	210	240	297	300	350	370	400	465	
H2	13	13	13	13	15	19	21	21	24	25.5	32	35	40	46	
W1	43	46	46	56	69	70.5	85	109	133	127	168	189.5	189	209	
W2	35	37	37	47	57	65	79	96	117	113	153	163	171	191	

NO.	PART	MATERIAL	QTY
1	BODY	UPVC, PP, CPVC, PVDF	1
2	DISC	CPVC, PP, PVDF	1
3	SEAT SEAL	EPDM, FPM	1
4	STEM	SUS 410	1
5	O-RING	EPDM, FPM	2
6	O-RING	EPDM, FPM	2
7	COUPLING	SUS	1
8	MOUNTING PAD	SUS	1
9	ELECTRIC ACTIATR	ALUMINIUM ALLOY ENCLOSURE	1
10	PIN	SUS	1

ELECTRIC ACTUATOR	Single-phase		Three-phase		
	110V	220V	220V	380V	440V
BM2	V	V	V	V	V
OMA	V	V	X	X	X
OM2	V	V	V	V	V
OM3	V	V	V	V	V
OM4	V	V	V	V	V
OM5	V	V	V	V	V
OM6	V	V	V	V	V
OM7	V	V	V	V	V
OMB	V	V	V	V	V

SIZE	ELECTRIC ACTUATOR	
	WITH HANDWHEEL	WITHOUT HANDWHEEL
2"	OM2	OMA
2-1/2"	OM2	OMA
3"	OM2	OMA
4"	OM3	BM2
5"	OM3	-
6"	OM4	-
8"	OM4	-
10"	OM5	-
12"	OM6	-
14"	OM7	-
16"	OM8	-

备注：
1.上述电动驱动器(Electric Actuator)按型号及图形仅供参考，可依客户需求选用。
2.18"及以上规格资料欢迎进一步向本公司洽询。



Excellent & Advanced

VP-900 Series

Molded-In-Place
Ball Valve
简单型球阀

- VP-900. 910
Compact Ball Valve
简单型球阀



VP-900 .910 简单型球阀

Compact Ball Valve

- Pressure rating:
150 PSI @73.4°F(23°C)
- low flow loss
- Low cost and most convenient
- 工作压力：150 PSI @73.4°F(23°C)
- 流量损失小
- 操作方便，使用成本低廉

Type 型号	Size 尺寸	Standard 规格	Material 材质	Seat 球座	O-ring O形环	End type 接口
VP-900	3/8"~2"	ANSI, JS, DIN	UPVC	PTFE	EPDM, FPM	Socket, Threaded, Flanged
VP-901	3/8"~2"	ANSI, JS, DIN	CPVC	PTFE	EPDM, FPM	Socket, Threaded, Flanged
VP-910	3/8"~4"	ANSI, JS, DIN	UPVC	EPDM	EPDM, FPM	Socket, Threaded, Flanged
VP-911	3/8"~2"	ANSI, JS, DIN	CPVC	EPDM	EPDM, FPM	Socket, Threaded, Flanged
VP-915	1/2"~2"	ANSI, JS, DIN	ABS	EPDM	EPDM, FPM	Socket, Threaded, Flanged



I.P.S. DIM.

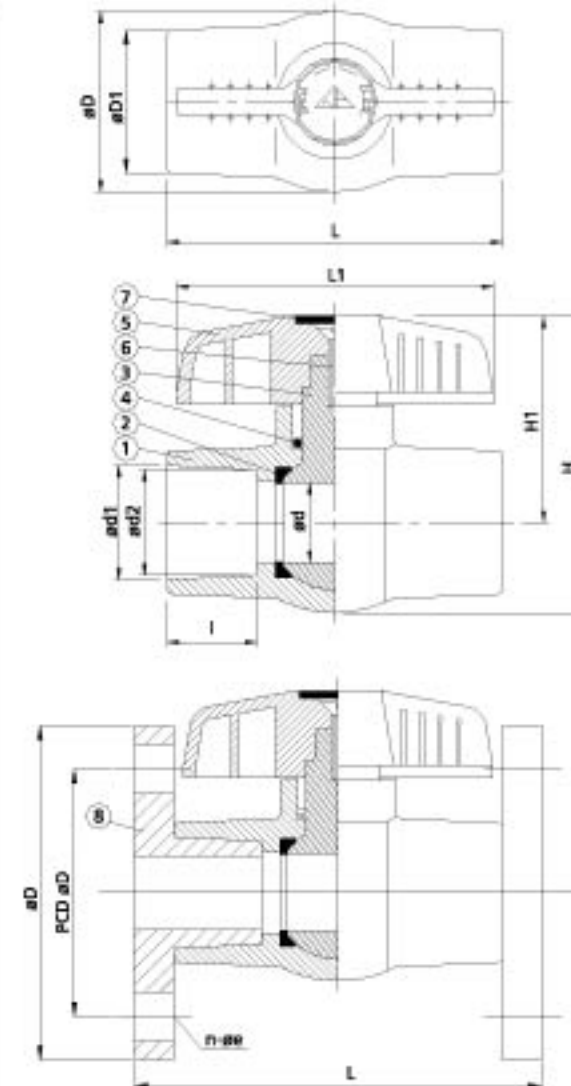
Nom.	SIZE	10mm	15mm	20mm	25mm	32mm	40mm	50mm	65mm	80mm	100mm
		(3/8")	(1/2")	(3/4")	(1")	(1 1/4")	(1 1/2")	(2")	(2 1/2")	(3")	(4")
JIS	d1	18.4	22.30	26.30	32.33	38.43	48.46	60.56	76.6	89.6	114.7
	d2	17.78	21.70	25.70	31.67	37.57	47.54	59.44	75.87	88.83	113.98
ANSI	d1	17.45	21.54	26.67	33.65	42.42	48.56	60.63	73.38	89.31	114.76
	d2	17.04	21.23	26.57	33.27	42.04	48.11	60.17	72.85	88.7	114.07
DIN	d1	16.3	20.3	25.3	32.3	40.3	50.3	63.3	75.3	90.3	110.4
	d2	16.1	20.1	25.1	32.1	40.1	50.1	63.1	75.1	90.1	110.1
BS	d1	17.3	21.5	26.9	33.7	42.4	48.4	60.5	75.5	89.1	114.5
	d2	17.1	21.3	26.7	33.5	42.2	48.2	60.3	75.0	88.8	114.2
I	DIN	14	16	19	22	26	31	38	44	51	61
	ANSI, JIS	19.05	22.22	25.4	28.57	31.75	34.93	38.1	44.45	47.63	57.15
thd. /in	BSPT	19	14	14	11	11	11	11	11	11	11
	NPT	18	14	14	11.5	11.5	11.5	11.5	8	8	8
D	31	38	49	57	63	75	92	110	133	170	
D1	24	30	38	45	54	62	77	92	106	135	
d	12	14	20	25	30	36	46.5	58	77	98	
L	68	82	95	106	114	130	147	204	229	300	
L1	60	70	88	100	100	109	134	178	224	276	
H	49	64	79	95	99	115	135	160	190	233	
H1	34	43	54	65	67	78	89	105	124	148	

C.T.S. DIM.

Nom.	SIZE	Tubing	Tubing	Tubing	Tubing	Tubing	Tubing
		(1/2")	(3/4")	(1")	(1-1/4")	(1-1/2")	(2")
D	32	39.6	52	57	63	79	
D1	24	30	38	45	54	65.6	
d	12.4	18.3	23.5	25	30	36	
d1	16.08	22.45	28.83	24.95	41.25	54.15	
d2	15.72	22.10	28.47	35.3	41.6	54.15	
L	68	82	95	106	114	144.5	
L1	60	70	88	100	100	109	
H	49	64	79	93	98	115	
H1	34	44	54	65	67	78	
I	19	22.2	25.4	28.2	32	42.9	

Nom.	SIZE	15mm	20mm	25mm	32mm	40mm	50mm	65mm	80mm	100mm
		(1/2")	(3/4")	(1")	(1-1/4")	(1-1/2")	(2")	(2-1/2")	(3")	(4")
JIS	D	95.5	100	124.5	134.5	140.5	155	175	184.5	209.5
	D1	70	75	90	100	105	120	140	150	175
	n-øø	4-15	4-15	4-19	4-19	4-19	4-19	4-19	8-19	8-19
	L	112	127	138	150	166	187	248	274	343
ANSI	D	89	98	108	117	127	155	178.5	190.5	230
	D1	60	70	79	89	98	121	140	152	191
	n-øø	4-16	4-16	4-16	4-16	4-16	4-19	4-19	4-19	8-19
	L	106	121	135	148	164	187	248	273	348
DIN	D	95.5	100	124.5	134.5	140.5	155	175	184.5	209.5
	D1	65	75	85	100	110	125	145	160	180
	n-øø	4-15	4-15	4-15	4-19	4-19	4-19	4-19	8-19	8-19
	L	112	127	136	150	166	187	248	274	343

NO.	PART	MATERIAL	QTY
1	BODY	UPVC, CPVC, ABS	1
2	SEAT SEAL	EPDM, PTFE	2
3	BALL	UPVC, CPVC, ABS, PP	1
4	O-RING	EPDM, FPM	1
5	HANDLE	ABS	1
6	BOLT	ZINC-PLATED STEEL	1
7	CAP	ABS	1
8	FLANGE	UPVC, CPVC, ABS, PP	1

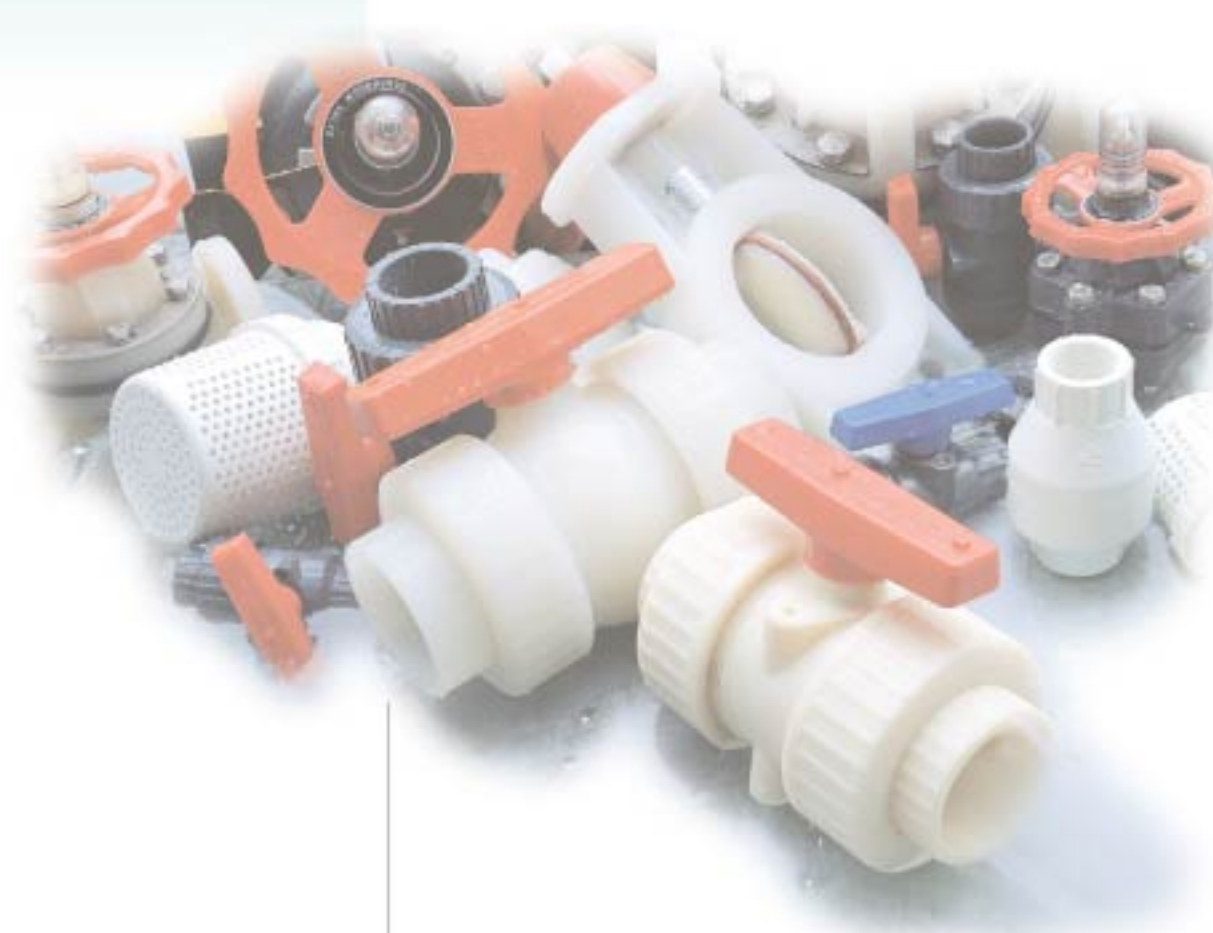


PRODUCTS PROPERTIES

An experienced manufacturer specializing in Plastic Valves and Pipe Fittings

● REFERENCE RANGE OF TEMPERATURE

Material	Polyvinyl Chloride	Chlorinated Polyvinyl Chloride	Polypropylene	Vinylidene Fluoride	Ethylene Propylene Rubber	Polytetrafluoroethylene (Trade name, Teflon®)	Fluororubber (Trade name Viton®)
Abbreviation	PVC	CPVC	PP	PVDF	EPDM	PTFE	FPM
General chemical resistance	Resistant against most of acids, alkalis and salts of high to low concentration level. However, the material tends to be attacked by some chemicals - such as aromatic hydrocarbon, ketones, esters and chlorinated hydrocarbon.	Resistance properties are nearly the same as PVC. Having a high heat-resistance, this is serviceable in the temperature range higher than the former's.	Not stable against strong acids such as concentrated nitric acid and chrome acid mixture, but this is resistant against other acids, alkalis and salts. Resistant against many organic solvents (specifically the solvent with active group), but tends to be attacked by chlorine-containing solvents, aliphatic series and aromatic hydro-carbon.	Highly resistant up to a high temperature range against ordinary acids & salts and organic chemicals, but broken down by fuming sulfuric acid and strong basic amines. Also, the use conditions with ketone, amide, ester, organic solvent and alkali are limited.	Provided with an excellent ozone-resistance and chemical-resistance. Comparatively resistant against ketone and ester, but less resistant against aromatic & aliphatic families, and gasoline and oil.	Resistant against ordinary acid and alkali, and not dissolved nor changed by ordinary solvent medium. Attacked by melted alkali metal and in a high temperature, by fluorine and chlorine trifluoride.	Most chemical-resistant among all rubber families. Has a good resistance against strong oxidizing acid such as concentrated sulfuric acid and nitric acid; resistant against aliphatic and aromatic families and oils, but attacked by ketones, ammonia anhydride, concentrated caustic soda, etc.
Max. Service temperature	Continuous	5° ~ 50°C	0° ~ 80°C	-20° ~ 120°C	-10° ~ 130°C	-20° ~ 250°C	-5° ~ 150°C
	Short hours	60°C	100°C	90°C	130°C	150°C	200°C



● CHEMICAL RESISTANCE OF MATERIAL

Chemicals	Concentration (%)	Temperature (°C)	Material							
			PVC	CPVC	PP	PVDF	EPDM	PTFE	FPM	
Sodium chloride	Saturated Water Solution	40	⊙	⊙	⊙	⊙	⊙	⊙	⊙	⊙
		60	⊙	⊙	⊙	⊙	⊙	⊙	⊙	⊙
		80	⊙	⊙	⊙	⊙	⊙	⊙	⊙	⊙
Hydrochloric acid	35	40	⊙	⊙	⊙	⊙	⊙	⊙	⊙	⊙
		60	⊙	⊙	⊙	⊙	⊙	⊙	⊙	⊙
		80	⊙	⊙	⊙	⊙	⊙	⊙	⊙	⊙
Caustic soda	50	40	⊙	⊙	⊙	⊙	⊙	⊙	⊙	⊙
		60	⊙	⊙	⊙	⊙	⊙	⊙	⊙	⊙
		80	⊙	⊙	⊙	⊙	⊙	⊙	⊙	⊙
Chromic acid	20	40	⊙	⊙	⊙	⊙	⊙	⊙	⊙	⊙
		60	⊙	⊙	⊙	⊙	⊙	⊙	⊙	⊙
		80	⊙	⊙	⊙	⊙	⊙	⊙	⊙	⊙
Acetic acid	50	40	⊙	⊙	⊙	⊙	⊙	⊙	⊙	⊙
		60	⊙	⊙	⊙	⊙	⊙	⊙	⊙	⊙
		80	⊙	⊙	⊙	⊙	⊙	⊙	⊙	⊙
Soda hypochlorite	13	40	⊙	⊙	⊙	⊙	⊙	⊙	⊙	⊙
		60	⊙	⊙	⊙	⊙	⊙	⊙	⊙	⊙
		80	⊙	⊙	⊙	⊙	⊙	⊙	⊙	⊙
Nitric acid	50	40	⊙	⊙	⊙	⊙	⊙	⊙	⊙	⊙
		60	⊙	⊙	⊙	⊙	⊙	⊙	⊙	⊙
		80	⊙	⊙	⊙	⊙	⊙	⊙	⊙	⊙
Toluene		40	⊙	⊙	⊙	⊙	⊙	⊙	⊙	⊙
		60	⊙	⊙	⊙	⊙	⊙	⊙	⊙	⊙
		80	⊙	⊙	⊙	⊙	⊙	⊙	⊙	⊙
Hydrogen sulfide	Aqueous Solution	40	⊙	⊙	⊙	⊙	⊙	⊙	⊙	⊙
		60	⊙	⊙	⊙	⊙	⊙	⊙	⊙	⊙
		80	⊙	⊙	⊙	⊙	⊙	⊙	⊙	⊙
Sulfuric acid	90	40	⊙	⊙	⊙	⊙	⊙	⊙	⊙	⊙
		60	⊙	⊙	⊙	⊙	⊙	⊙	⊙	⊙
		80	⊙	⊙	⊙	⊙	⊙	⊙	⊙	⊙

⊙ Not affected △ Slightly affected but serviceable
 ○ Negligibly affected × Not serviceable

● BASIC PROPERTIES OF PLASTICS

Item	Unit	Rigid PVC (UPVC)	Heat-resistant (CPVC)	Polypropylene (PP)	Vinylidene fluoride (PVDF)
Specific gravity	—	1.40	1.55	0.92	1.77
Tensile strength	kgf/cm ²	480 and over	500 and over	250 and over	500 and over
Tensile strength (at 90°C)	kgf/cm ²	—	250 and over	150 and over	250 and over
Tensile Modulus	kgf/cm ²	3x10 ⁴	3.2x10 ⁴	1.2x10 ⁴	1.5x10 ⁴
Bending strength	kgf/cm ²	800 and over	900 and over	250 and over	660 and over
Poisson's ratio	—	0.38	0.38	0.44	0.28
Heat distortion temperature (4.6kg (W))	°C	74	110	105	145
Temperature limit for continuous service	°C	50	90	80	120
Linear thermal coefficient of expansion	°C	7x10 ⁻⁵	7x10 ⁻⁵	12x10 ⁻⁵	12x10 ⁻⁵
Thermal conductivity	kcal/mh°C	0.13	0.12	0.10	0.11

● GENERAL INSTALLATION INSTRUCTION



1. Apply sufficient cement on the inner wall of valve and outside wall of pipe, please do not apply too much cement, for it may obstruct the fluid flowing in the valve.
2. Immediately join the valve and pipe while the surfaces are still wet, and turn 45°. Hold the valve and pipe together for approximately 10 seconds.
3. As our compact ball valves are NSF certified products, we recommend to use NSF certified cement only.